



LOW PRESSURE CONNECTORS EUROPE

TRAINING MODULE QUICK-ACTING COUPLERS

TABLE OF CONTENTS

Introduction

Product advantages

Overview

Technical data

Safety couplers

The range

Part Number Configuration

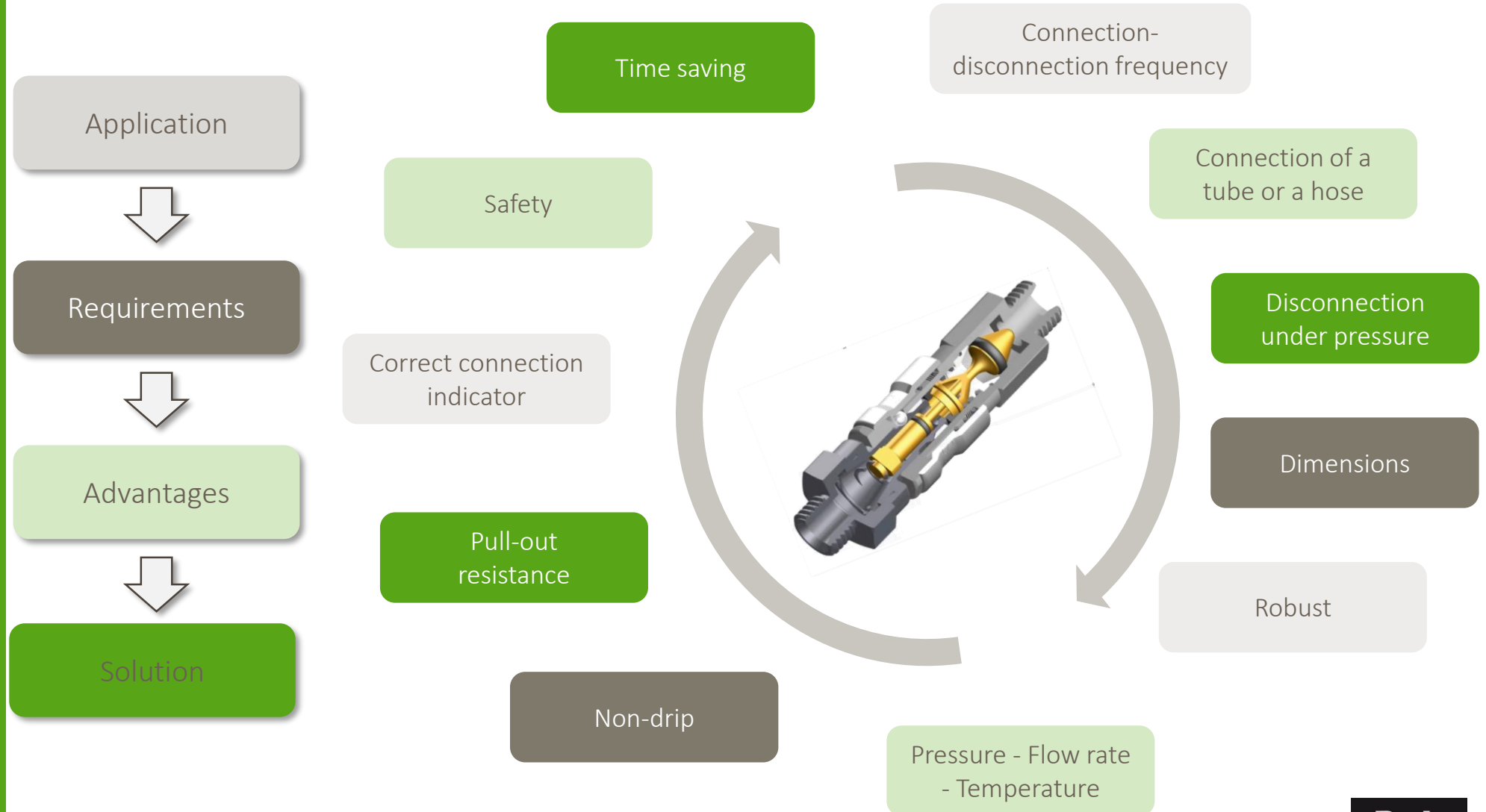
Applications

Marketing material

QUICK-ACTING COUPLERS

PRODUCT ADVANTAGES – Quick-acting couplers

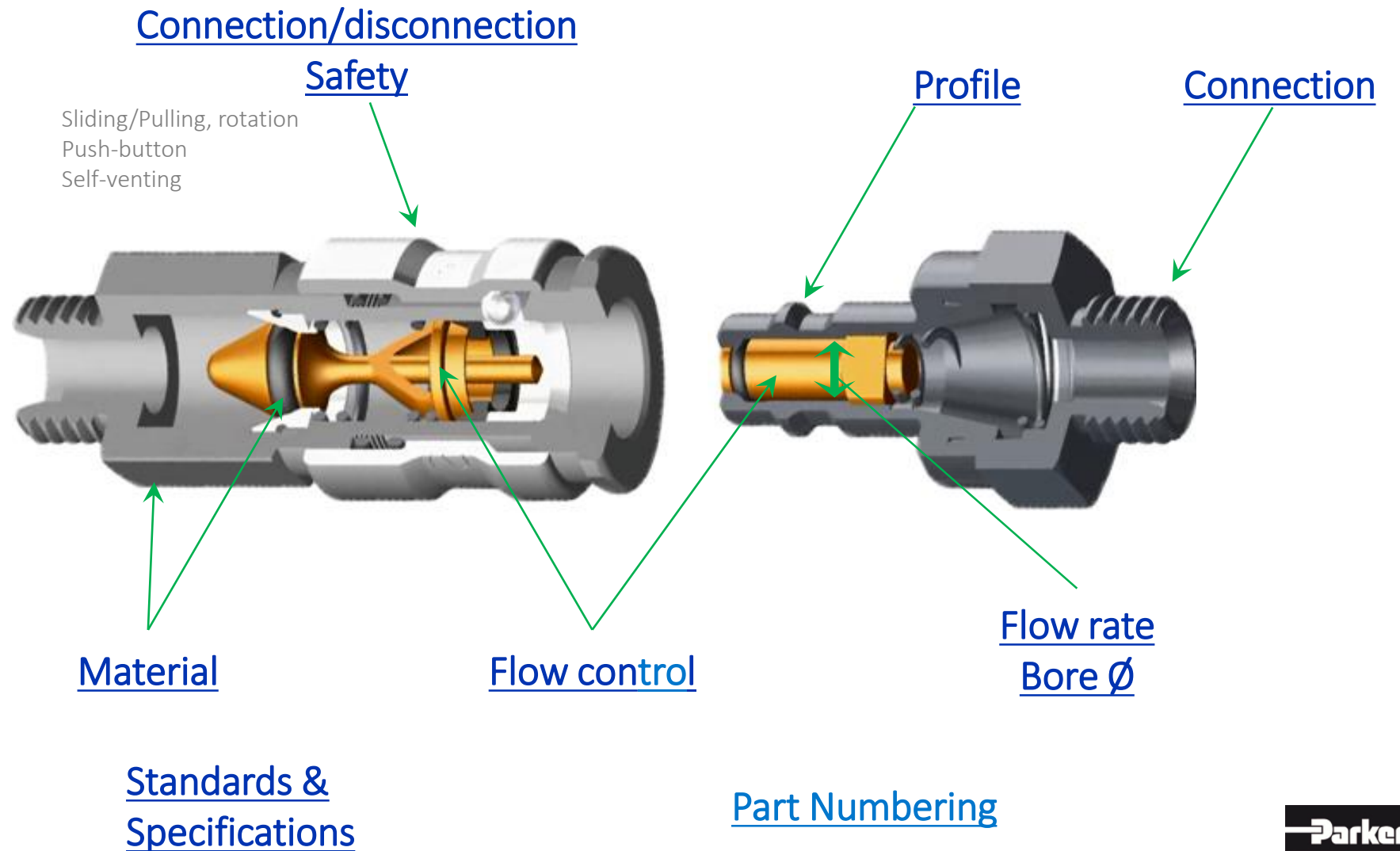
Suitable for all low-pressure connection requirements



QUICK-ACTING COUPLERS

OVERVIEW

Connection = coupler + plug



QUICK-ACTING COUPLERS

OVERVIEW – The range

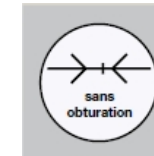
Various ways of discovering the range:

⇒ Probe profiles

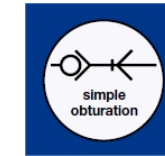
ISO B, ISO C, ARO, European, etc.



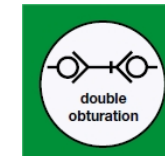
⇒ Flow control/Safety



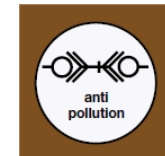
KF: full flow



KA = single shut-off



KB = double shut-off



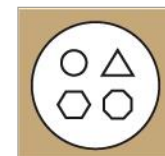
KL: leak-free disconnection



Venting-Safety
KE - C9000



Breathing
air



Code

⇒ Material



Brass/Steel

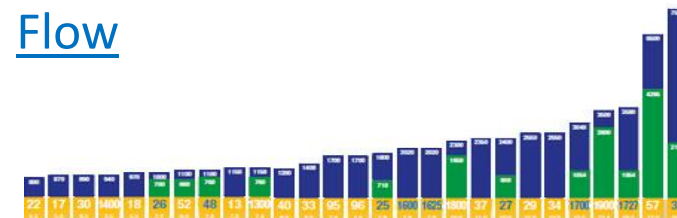


Stainless steel



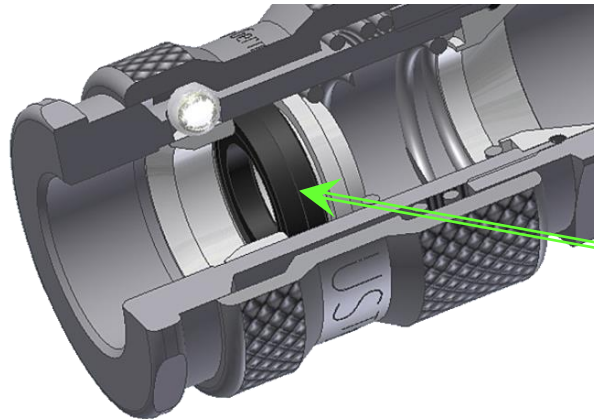
Polymer

⇒ Flow



OVERVIEW – Materials

Each series may offer several choices of seal material:



Seal:

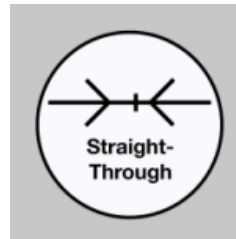
- NBR: compressed air
- FKM: corrosive fluids
chemical resistance
high temperatures
- EPDM: water, gas
- FFKM: very high temperatures



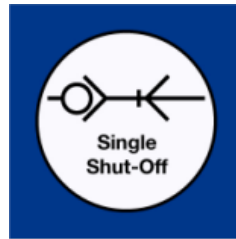
QUICK-ACTING COUPLERS

OVERVIEW – Flow control

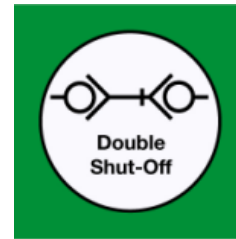
Flow action options:



Full flow



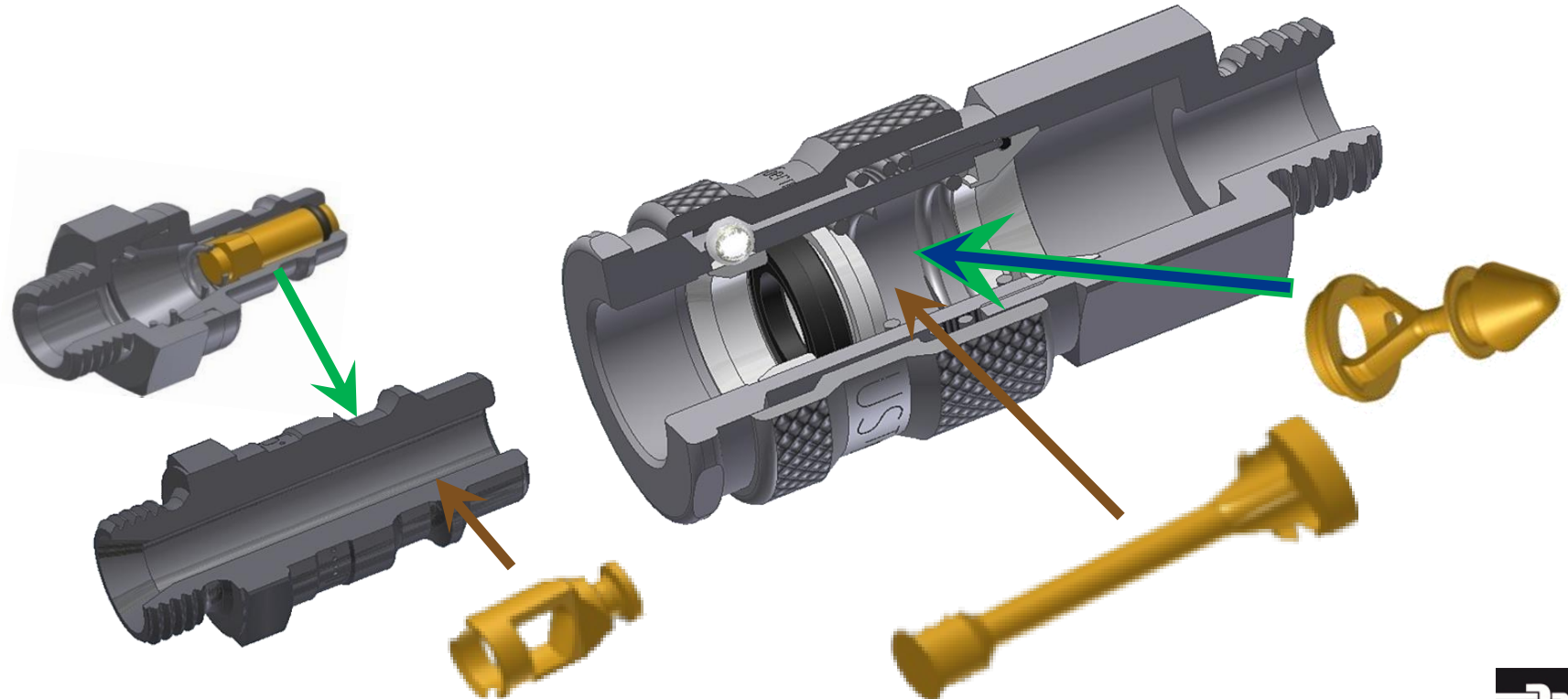
Single
Shut-off



Double
Shut-off



Leak-free



QUICK-ACTING COUPLERS

OVERVIEW – Profiles

Some examples:



European
Series 21SF - ND 5



ISO 6150 B (USA, ES, N, GR)
Series 23SF - ND 5.5



Scandinavian
Series 1300SF - ND 7.4



Iso C
Series 18SF - ND 5.5



European
Series 25/26SF - NW 7.2



UK (Schrader)
Series 17SF - ND 5.5



ARO (BE, NL, CH, SA)
Series 22SF - ND 5.5



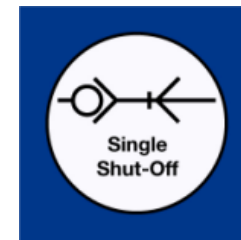
Asian
Series 13SF - ND 5.5



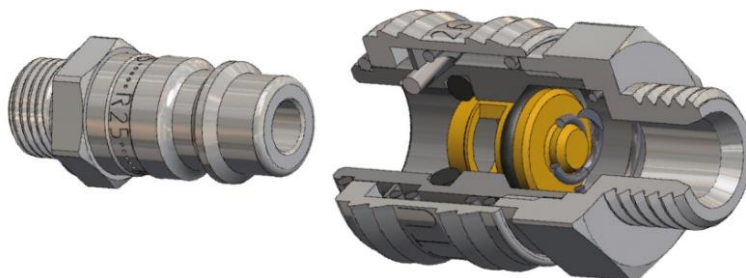
QUICK-ACTING COUPLERS

OVERVIEW

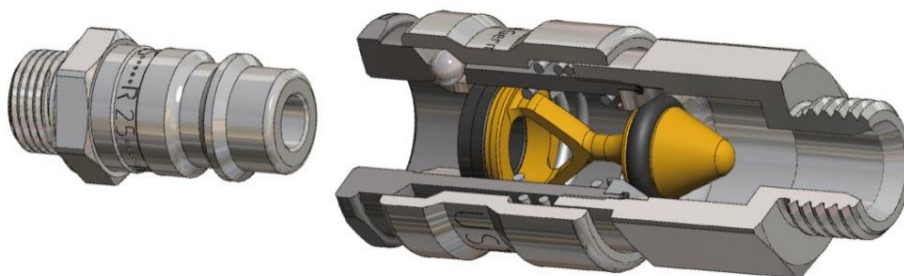
Valves



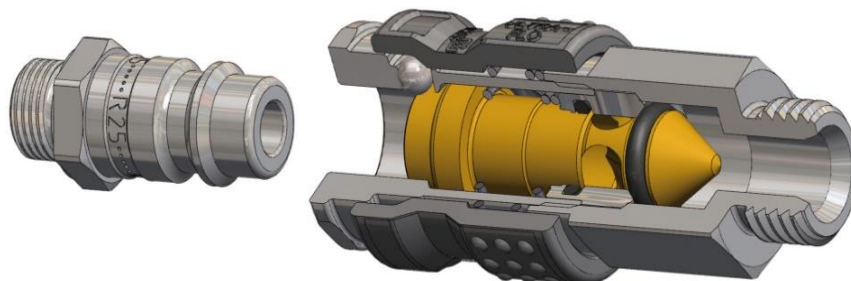
Single
Shut-off



Standard valve: e.g Series 26KA – DN 7.4
Approximate air flow = 1000 L/min
Compact and robust



'UltraFlow' valve: e.g Series 25KA – DN 7.4
Approximate air flow = 1800 L/min
Less turbulence, Flow optimised by 80 %



'Ultra HighFlow' valve: e.g Series 1600KA – DN 7.4
Approximate air flow = 2100 L/min
Compact, ultra-rationalised design
Optimised energy efficiency, Spring isolated from the flow, Low connection force

QUICK-ACTING COUPLERS

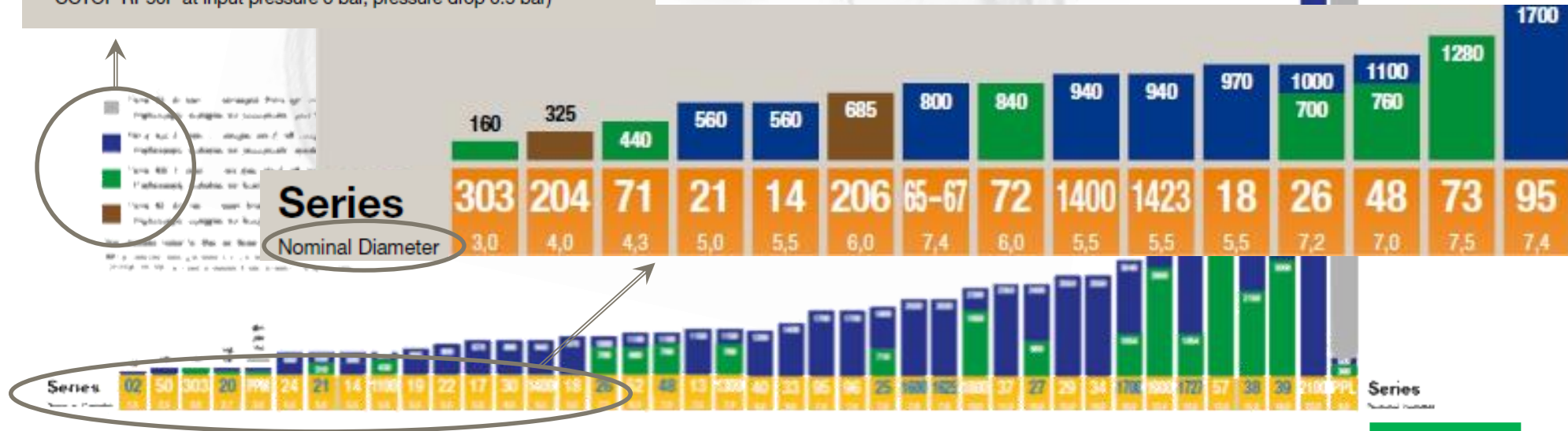
OVERVIEW – Flow rate - Diameter

Each series offers a flow rate to meet all your requirements

- Flow KL (l/min.) – leak-free coupling systems
- Flow KB (l/min.) – double shut-off coupling systems
- Flow KA (l/min.) – single shut-off coupling systems
- Flow KF (l/min.) – straight-through coupling systems

The details refer to the air flow rate in litres/minute.*

*(Measurement data generated in accordance with ISO 6358;
CCTOP RP50P at input pressure 6 bar, pressure drop 0.5 bar)



OVERVIEW – Range examples

Various groups in the range

Pneumatic & Fluid Transmission



- Single and double shut-off versions plus breathing protection version
- Materials: Brass/Steel/Stainless steel
- Nominal diameter: 1.5 mm to 25 mm

Safety Self-venting/ Breathing air



- Single and double shut-off versions plus breathing protection version
- Self-venting couplers
- Breathing air
- Colour coding

OVERVIEW – Range examples

Various groups in the range

Mould couplers



- Complete range of Mould couplers for profiles worldwide (International, European, French).
- Max. pressure 20 bar
- Temperature greater than 180 °C

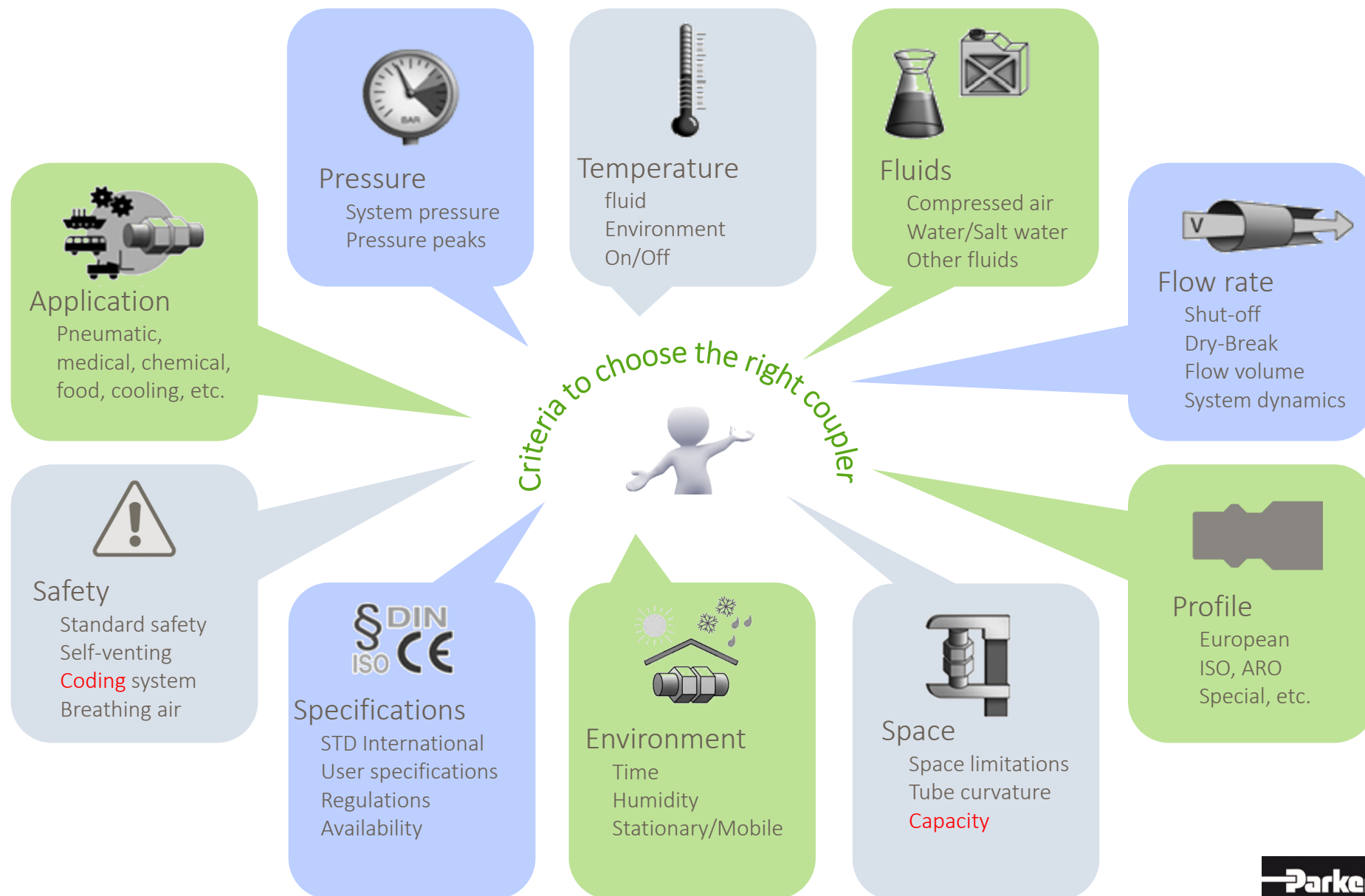
Medical/Life
Science



- Numerous options for medical and pharmaceutical applications
- Thermoplastic in USP class VI quality.
- Available in diameters 1/10" to 1/4".

QUICK-ACTING COUPLERS

PRODUCT ADVANTAGES – Quick-acting couplers



OVERVIEW – Range examples

Overview of standard industrial couplers



Series 02
DN 1.5



Series 20
DN 2.7



Series 21
DN 5



Series 26/25/1600/1625
Series 24/23/1400/1423
DN 7.8



Series 27/1700/1727
DN 10



Series 38 / 39
DN 15 / 19

THE RANGE

Euro profile - One for All - All for One

Seven compressed air couplings for different requirements: one universal plug profile

26KP

Self-venting Push-button Couplers

- Flow Rate: 1.150 l/min.
- Working Pressure : 12 bar
- Coupling force at 6 bar : 110 N
- Available : Brass
- ISO 4414

1600KA/1625KA

Premium Compressed Air Coupling

- Ultra-High-Flow
- Flow rate: 2.150 l/min.
- Working Pressure: 35 bar
- Coupling force at 6 bar: 75 N
- Available: Steel, with 2-component plastic sleeve (1625KA)

C9000

Venting Coupling by Polymer Sleeve Rotation

- Flow rate: 2.000 l/min.
- Working Pressure: 16 bar
- Available: Technical polymer sleeve
- ISO 4414 DIN EN 983

25KA

Industrial Compressed Air Coupling

- High-Flow
- Flow rate: 1.800 l/min.
- Working Pressure: 35 bar
- Coupling force at 6 bar: 100 N
- Available: Brass a. Stainless Steel

26KA

Standard Compressed Air Coupling

- Standard-Flow
- Flow rate: 1.000 l/min.
- Working Pressure: 35 bar
- Coupling force at 6 bar: 120 N
- Available: Brass a. Stainless Steel

26KE

Self-Venting Coupling with Thermoplastic sleeve

- Standard-Flow
- Flow rate: 1.400 l/min.
- Working Pressure: 8 bar
- Coupling force at 6 bar: 95 N
- Available: Brass
- ISO 4414 DIN EN 983

1600KE

Self-Venting Coupling with Steel sleeve

- Ultra-High-Flow
- Flow rate: 2.083 l/min.
- Working Pressure: 2-12 bar
- Coupling force at 6 bar: 74 N
- Available: Steel
- ISO 4414 DIN EN 983



Standardized plug profile:

- Suitable for all 7 coupling types
- Available in steel or brass

THE RANGE

ISO B profile - One for All - All for One

Six compressed air couplings for different requirements: one universal plug profile

24KP & 30KP

Self-venting Push-button Couplers

- Flow Rate : 820 l/min. Ø5,5
1.050 l/min. Ø 8
- Working Pressure: 12 bar
- Coupling force at 6 bar : 110 N
- Available : Brass



23KA

Industrial Compressed Air Coupling

- High-Flow
- Flow rate: 900 l/min.
- Working Pressure: 35 bar
- Coupling force at 6 bar: 110 N
- Available: Brass



C9000

Venting Coupling by Polymer Sleeve Rotation

- Flow rate: Ø5,5 : 1.250 l/min
Ø8 : 2.400 l/min
- Working Pressure: 16 bar
- Available: Technical polymer sleeve
- ISO 4414 DIN EN 983



24KE

Self-Venting Coupling with Thermoplastic sleeve

- Standard-Flow
- Flow rate: 830 l/min.
- Working Pressure: 12 bar
- Coupling force at 6 bar: 80 N
- Available: Brass
- ISO 4414 DIN EN 983



24KA

Standard Compressed Air Coupling

- Standard-Flow
- Flow rate: 550 l/min.
- Working Pressure: 35 bar
- Coupling force at 6 bar: 80 N
- Available: Brass



1400KE

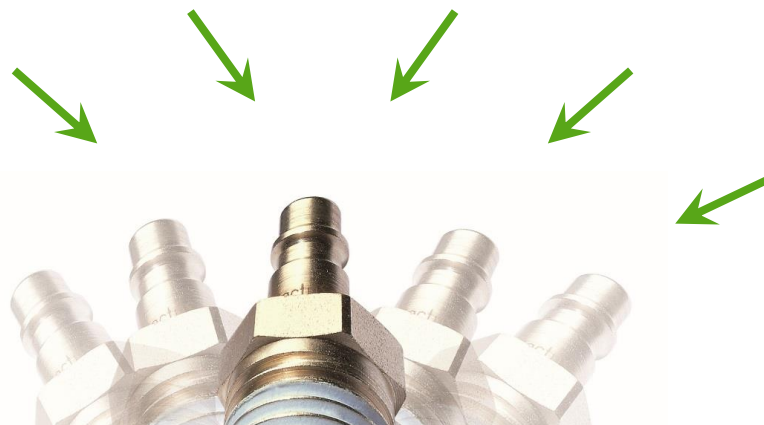
Self-Venting Coupling with Steel sleeve

- Ultra-High-Flow
- Flow rate: 980 l/min.
- Working Pressure: 0-12 bar
- Coupling force at 6 bar: 89 N
- Available: Steel
- ISO 4414 DIN EN 983



Standardized plug profile

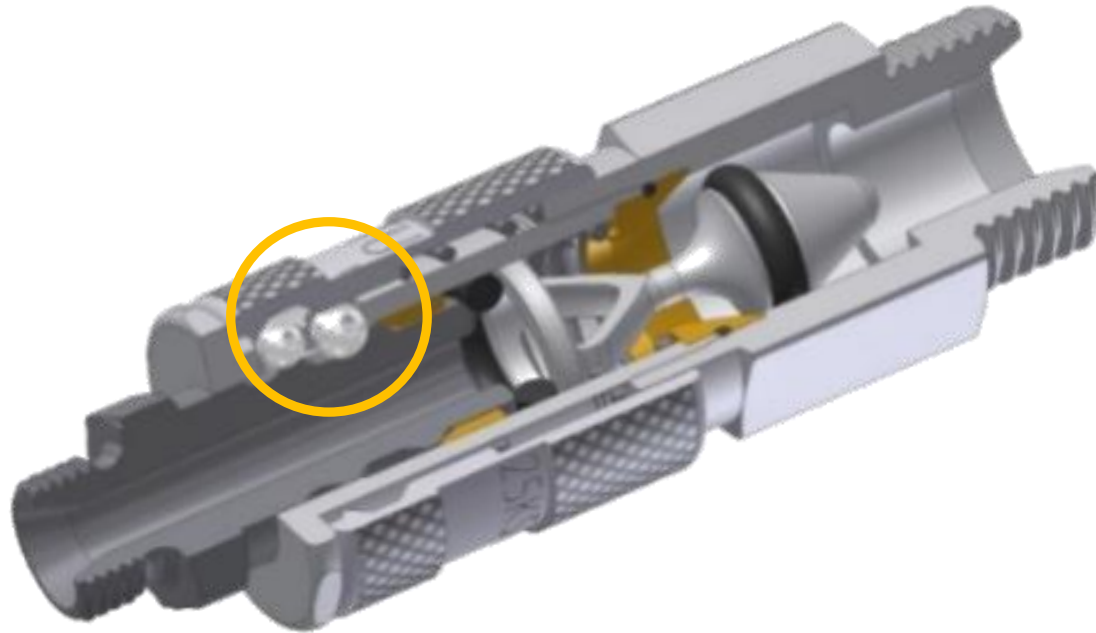
- Suitable for all 6 coupling types
- Available in steel or brass



QUICK-ACTING COUPLERS

SAFETY

Protection options during **disconnection**:



SAFETY

Protection options during **disconnection**:

- Mechanical safety locking preventing accidental disconnection
- One-hand connection



- safety coupler – Full flow in the coupler and probe which are not fitted with valves



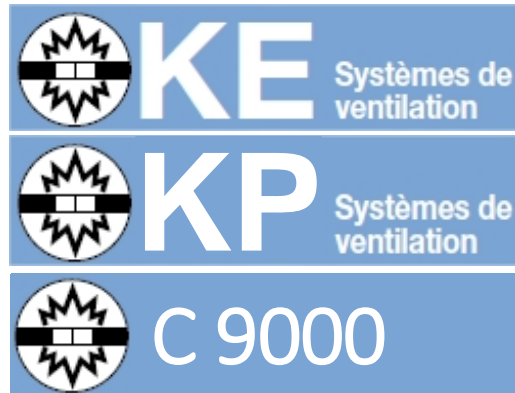
- safety coupler – single shut-off, coupler with valve, straight-through probe
- specific safety coupler for breathing air areas



- safety coupler double shut-off, both coupler and probe are fitted with a shut-off valves

SAFETY

Protection options during **disconnection**:



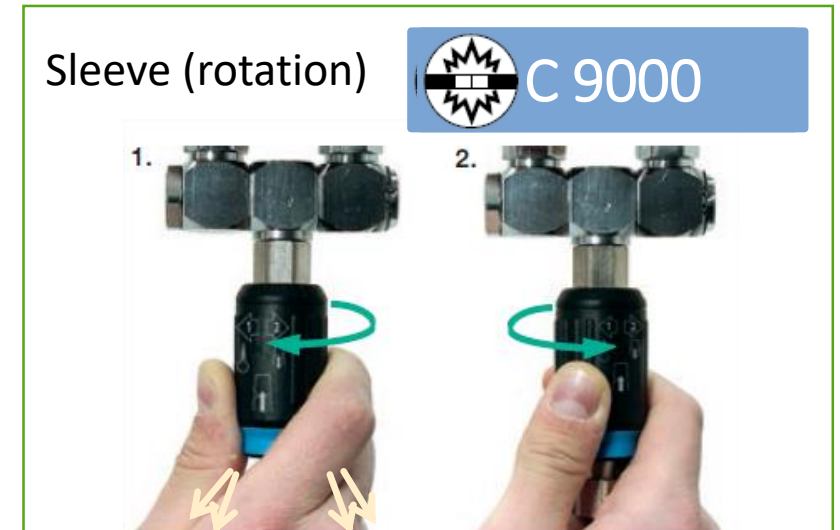
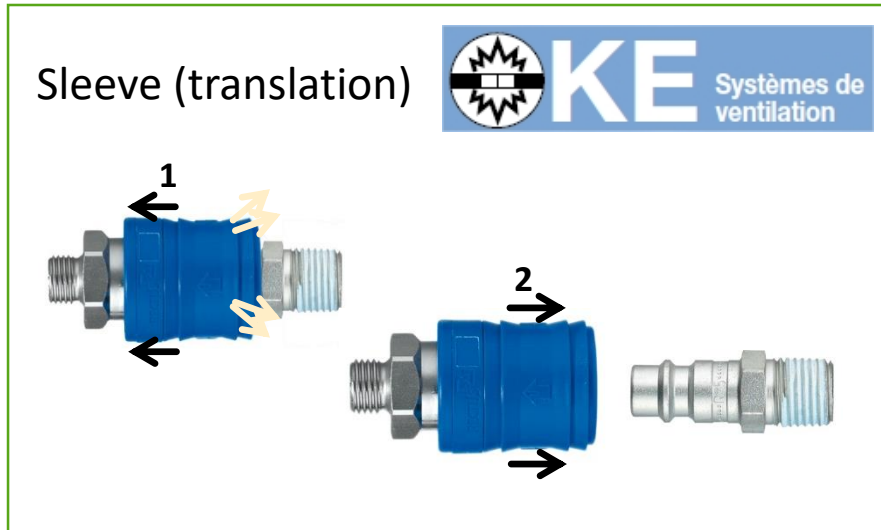
- Safety coupler with self-venting system
- When the sleeve is actuated, the probe remains locked. The air is vented automatically, disconnection is then possible by actuating the sleeve again in complete safety.
- One-hand operation possible



SAFETY

Securisation option of the **disconnection** :

3 self-venting couplers technologies

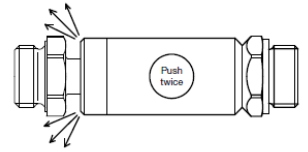


Push-Button:



COUPLEURS AUTOMATIQUES

SAFETY



Safety

Push button with 2-step disconnection :
1 – self venting 2- disconnection

Security

No unintentional disconnection and whiplash
Effect to prevent the risk of accident

Ergonomy

Easy-to-use and ergonomics for an intuitive
and easy handling

Reliability

Proven endurance

Robustness and lightweight

Aluminium body
Brass threads

Handling

Orientable, to facilitate assembly

Silicon free



Recognizability

Profile marked on the body to
prevent mistakes due to bad
connection

Interchangeability

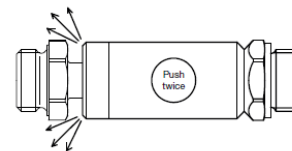
EURO - ISO C - ISO B
profiles

Regulations

Compliant with ISO 4414, RoHS, REACH

COUPLEURS AUTOMATIQUES

SAFETY

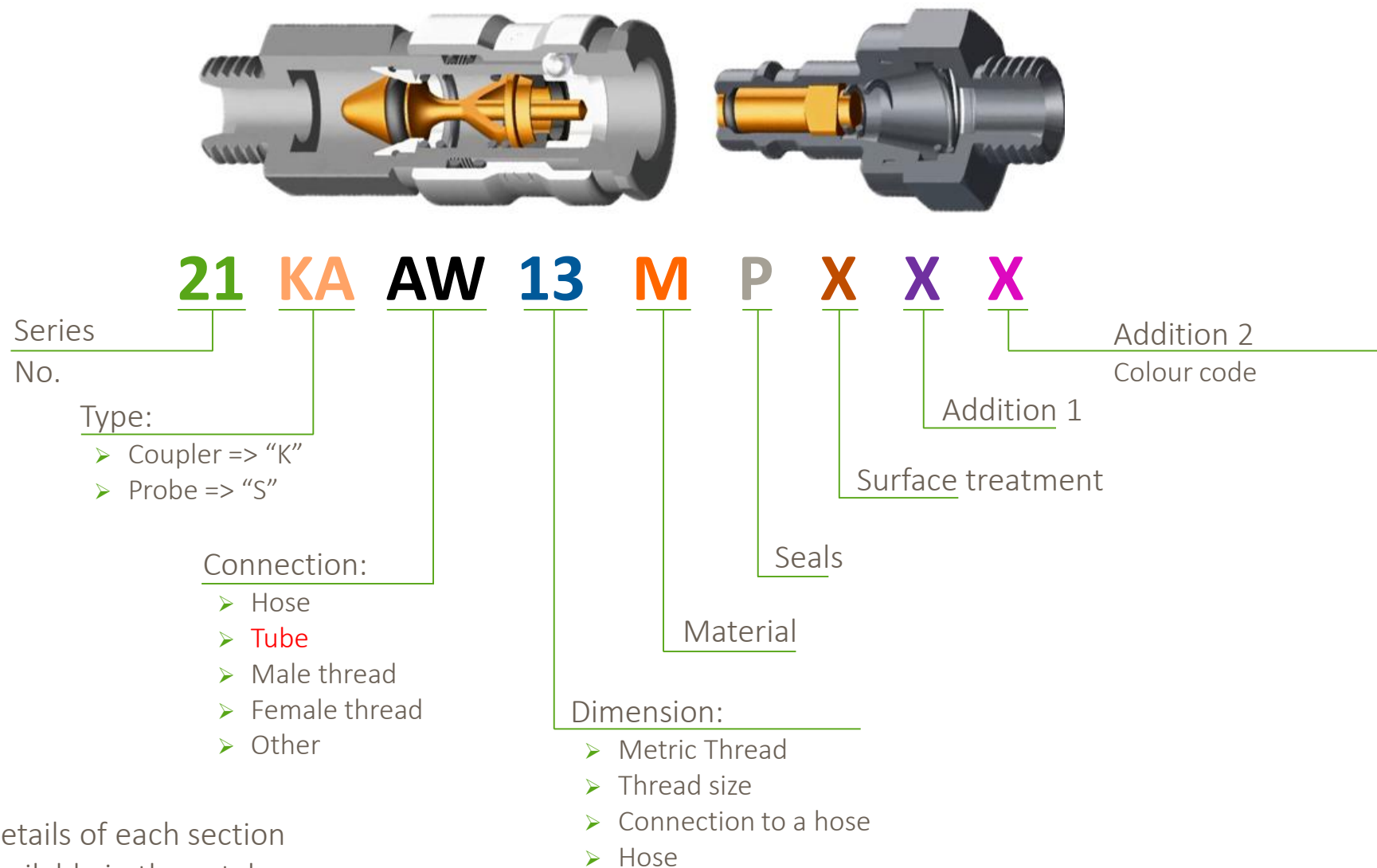


	Euro Profile	ISO C Profile		ISO B Profile	
					
Series	26 KP	18 KP	84 KP	24 KP	30 KP
Nominal Diameter	7,4	5,5	8	5,5	8
Working Pressure	12 bar	12 bar	12 bar	12 bar	12 bar
Working Temperature	-20 at +100 °C	-20 at +100 °C	-20 at +100 °C	-20 at +100 °C	-20 at +100 °C
Flow rate at 6 bar $\Delta P=0,6$	1225 l/min	810 l/min	2110 l/min	675 l/min	1470 l/min
Materials	Coupling : Anodised Aluminium, NP Brass Plug : Steel hardened, zinc plated Seal : NBR	Coupling : Anodised Aluminium, NP Brass Plug : Steel hardened, zinc plated Seal : NBR	Coupling : Anodised Aluminium, NP Brass Plug : Steel hardened, zinc plated Seal : NBR	Coupling : Anodised Aluminium, NP Brass Plug : Steel hardened, zinc plated Seal : NBR	Coupling : Anodised Aluminium, NP Brass Plug : Steel hardened, zinc plated Seal : NBR

QUICK-ACTING COUPLERS

PART NUMBERS

Structure of the coupler part numbers:



Full details of each section
are available in the catalogue

COUPLEURS AUTOMATIQUES

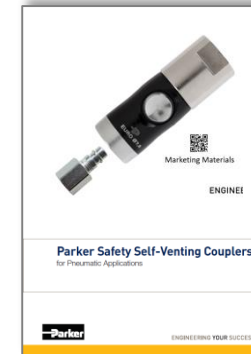
COMMUNICATION TOOLS

CUSTOMER PRESENTATION

FR, EN, DE



LEAFLET recto-verso



BROCHURE

24 pages



SAMPLE CASE



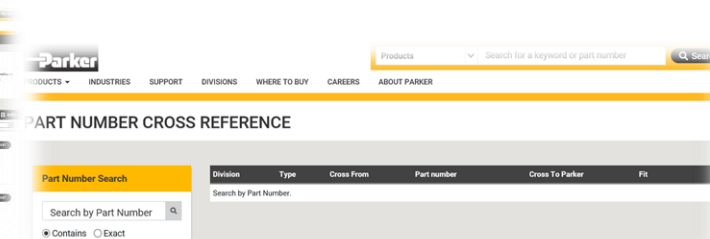
PROFILE CHECKER



ROLL UP
200x80 cms



WEBSITES
www.parkerlegris.com
www.parker.com



QUICK-ACTING COUPLERS

MAIN APPLICATIONS

Safety, performance, durability

COMPRESSED AIR NETWORKS

THERMAL

PLASTIC INJECTION

MACHINERY

RAIL

LIFE SCIENCE

AUTOMOTIVE

APPLICATIONS



QUICK-ACTING COUPLERS

MAIN APPLICATIONS

- Reliable anti-contamination solution for:
 - Cooling of electronics
 - Electricity production
 - Industrial cooling
 - Semiconductor industry
 - etc.



200KL cartridge

THERMAL



QUICK-ACTING COUPLERS

MAIN APPLICATIONS

LIFE SCIENCE

- Standard couplers made of various polymers or metals:



- System of customised solutions:



Life Science
Quick Connect Couplings for Medical-
and Bio-Technology

- aerospace
- climate control
- electromechanical
- filtration
- fluid & gas handling
- hydraulics
- pneumatics
- process control
- sealing & shielding

Parker

ENGINEERING YOUR SUCCESS.

QUICK-ACTING COUPLERS

MAIN APPLICATIONS

AUTOMOTIVE

- Standard couplers made of various metals:
 - Easy connection/disconnection
 - Easy one-hand operation
 - Various shut-off configurations available
 - etc.



QUICK-ACTING COUPLERS

MAIN APPLICATIONS

- Main applications: pneumatic and hydraulic brakes
- Couplers resistant to impact and vibration
- Resistance to dust and dirt for outdoor applications



Series	7000	303
Nominal diameter (mm)	9/12/16/20	3
Application	Cooling	Pneumatic brakes

Rail network

Transportation - Railway
Quick Connect Coupling Systems for Rail Vehicle Applications

Parker

ENGINEERING YOUR SUCCESS.

QUICK-ACTING COUPLERS

MAIN APPLICATIONS

PLASTIC INJECTION

- Mould cooling coupler:
 - High temperature versions available
 - Industrial cooling
 - Plastic injection industry
 - Versions with safety locking available
 - etc.

