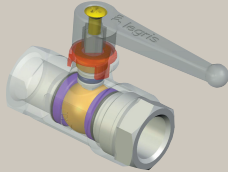


The Solution for Your Needs

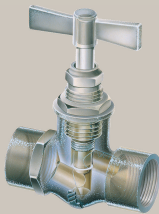
How to choose your ball valves?

Which kind of valve do you need ?

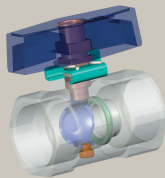
- **Ball Valves**



- **Needle Valves**

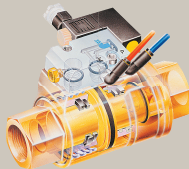


- **Butterfly Valves**



Represents an interesting economical alternative compared with a ball valve

- **Axial Valves**



What are the conditions of use ?

- Pressure
- Temperature inside the system
- Sealing requirements
- Flow requirements
- 2 ways or 3 ways
- Normally closed / Normally open ?

What type of fluid is being conveyed ?

- Compatibility of materials with the fluid : body & seals

Which technology is required to connect your ball valves ?

- Compression
- Threaded
- Push-in connection

Have you considered the additional product requirements ?

- Compression fittings
- Tubing
- Solenoid valves

What is your application environment ?

- Internal or external environment
- Risk of shocks
- Air quality
- Regulations
- Corrosion risk
- Frequency of operation

What other functions are required ?

- Lockable
- Vented
- Frequency of operation
- Electric or pneumatic

Part Number Identification

0402 04 10

Valve type

0400
0401
0402
...

O.D. of tube

04 = 4 mm
05 = 5 mm
...
40 = 40 mm

Thread

10 = 1/8"
13 = 1/4"
...
48 = 2"

Product Specifications Overview

	Materials	Fluids	Maximum Pressure (bar)	Temperature		Page
				Min.	Max.	
Industrial Valves						
Universal and Customised Series Ball Valves 	Nickel-plated forged brass	Compressed air Other fluids (see compatibility chart at the end of this chapter)	40	-40°C	+80°C +100°C: please contact us	444
Universal Series, Vented 	Nickel-plated forged brass	Compressed air Other fluids (see compatibility chart at the end of this chapter)	40	-40°C	+80°C	447
Universal Series, Lockable 	Nickel-plated forged brass, galvanised steel and epoxy locking system	Compressed air Other fluids (see compatibility chart at the end of this chapter)	40	-40°C	+80°C	448
Universal Light Series 	Forged brass or nickel-plated forged brass	Compressed air Other fluids (see compatibility chart at the end of this chapter)	20	-20°C	+80°C	449
DVGW Series Ball Valves 	Nickel-plated brass	Compressed air Other fluids (see compatibility chart at the end of this chapter)	40	-40°C	+170°C	451
Standard Series Ball Valves 	Nickel or chromium plated brass	Compressed air Other fluids (see compatibility chart at the end of this chapter)	30	-20°C	+130°C	452
Stainless Steel Series Ball Valves 	Stainless steel 316L	All fluids	35	-20°C	+150°C	454
High Pressure Ball Valves 	Zinc-plated brass	Compressed air, lubricants, gases	300	-15°C	+80°C	456
Mini Series Ball Valves 	Technical polymer/ Nickel-plated brass	Compressed air	10	-20°C	+80°C	457
LIQUIfit® Ball Valves 	Polypropylène	Beverages, water, industrial water, CO ² , inert gases	10	-15°C	+100°C	459
Brass Needle Ball Valves 	Shot-blasted forged brass nickel-plated	Compressed air, water, industrial fluids Other fluids: please contact us	120	-20°C	+100°C	461
Stainless Steel Needle Valves 	Stainless steel 316L	All fluids	400	-20°C	+180°C	460
Butterfly Valves 	Shot-blasted forged brass nickel-plated	Compressed air, abrasive fluids	16	-20°C	+80°C	462
Axial Valves 	Nickel-plated brass	Compressed air, water, industrial fluids Other fluids: please contact us	10	-20°C	+135°C	463