

# Industrial Cylinder Division

## Refresher Course (ICD Quote and Order Entry)



Quote procedure has changed since the division went live on the new system in November 2013.

To avoid delays in quoting product to your customer, please pay close attention to the next several slides.

# Configurator as Quote Portal

- The configurator is the required quote portal for all configured cylinders and configured service parts.
- For quoting custom kits, custom cylinders, accessories, obsolete products, etc -- email [cylpricing@parker.com](mailto:cylpricing@parker.com)

**DO NOT USE regional plant mailboxes for any quote**

- Regional Plant Mailbox will still be active for orders, expedites, ATRs, etc

- If a cylinder or service part does not generate a list price based on the selections chosen, or special instructions noted, “Consult Manufacturer” will be displayed under the **List** field on the configurator
- The next few slides will demonstrate how this new quote portal will work

1) Configure cylinder and “Consult Manufacturer” is displayed

For cylinder options not listed, please consult factory.

[LIST](#)  
[Consult](#)  
[Manufacturer](#)

Component	Code	Description
Cylinder or Configured Service Parts	CYL	Cylinder
Bore	25	25mm
Double Rod	-	Single Rod
Mounting Style	T	T - Standard Mount
Series	CHE	CHE - Aluminum Body Compact Hydraulic Cylinder
Piston	B	B - Non-Magnetic Piston
Port Type	T	T - SAE Straight Thread O-Ring
Seals	1	Standard (Class 1)
Special Modifications	S	S - Special Modifications - Describe in Part Special Instructions below.
Piston Rod End	4	4 - Style 4 Small Male
Piston Rod End Thread	A	A - Imperial (UNF, UNC, UN, BSF)
Stroke	55	mm
Port Type - Both Ends	T	T - SAE Straight Thread O-Ring
Port Size - Both Ends	SA2	#2 SAE
Port Location	1	Ports Position 1
Piston Rod Wrench Flats	2F	Standard 2 Wrench Flats

Part Special Instructions:

paint black

2) Click on CPN Button

[LIST](#)  
[Consult](#)  
[Manufacturer](#)

**Description**

**File**

Add to Order Go To Catalog Search  
View Summary  
CPN

**Configuration was saved**

Configuration was saved, CPN cannot be requested because part has Consult Manufacturing Price or CPN is disable

OK

This message will appear – click on OK

3) You will see a reference # under the Part Number

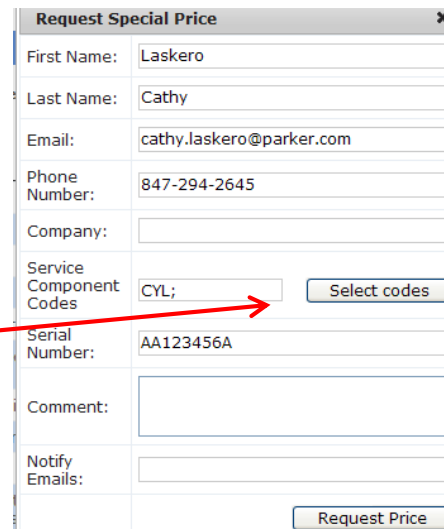
Part Number  
**201380**

*And Consult Manufacturer now becomes active for email*

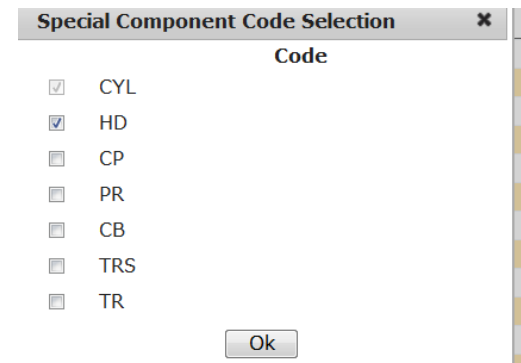
LIST  
Consult  
Manufacturer

## TO START THE QUOTE PROCESS, THE CONSULT MANUFACTURER LINK MUST BE CLICKED

4) Click on Consult Manufacturer and Request Special Price box will appear, beginning the quote process



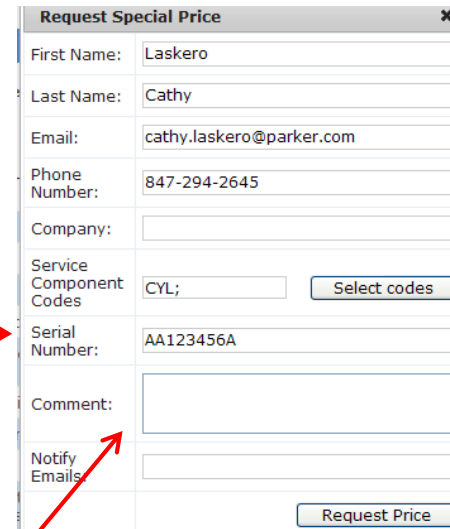
Phone # required



5) Click on 'Select Codes' if you are looking for quote on replacement service parts also

*Click on specific part and click ok*

5) *Critical - If this is replacement business please enter serial number in this box*

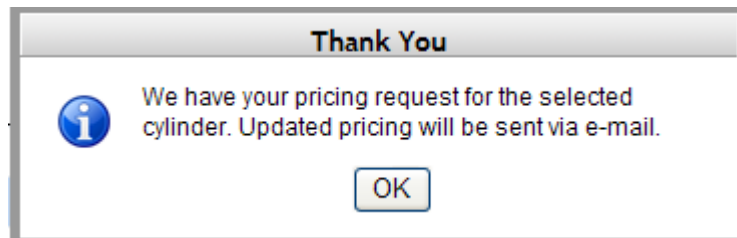


The screenshot shows a web form titled "Request Special Price" with a close button (X) in the top right corner. The form contains the following fields and buttons:

- First Name: Laskero
- Last Name: Cathy
- Email: cathy.laskero@parker.com
- Phone Number: 847-294-2645
- Company: (empty)
- Service Component Codes: CYL; [Select codes button]
- Serial Number: AA123456A (indicated by a red arrow from instruction 5)
- Comment: (empty text area)
- Notify Emails: (empty)
- [Request Price button] (indicated by a red arrow from instruction 7)

6) If you require service kits for *special* cylinder, put note in comment field so you do not have to create another email request to CYLPricing. **We have the 'Seal Kit Program' that will supply kits for majority of cylinders – please use this program**

7) Click on Request Price and you will be advised that your request is being processed



**8) An email will be sent to you with reference #**



Price is requested for 13759

**donotreply** to: cathy.laskero

09/12/2013 11:00 AM

[Hide Details](#)

From: donotreply@parker.com

To:  cathy.laskero@parker.com

Dear CL65178, Price is requested for CYL; by Laskero Cathy, company: , phone: 847-294-2645. Serial Number:  
AA123456A Comment:

**9) You will get a email back with reference number, Cylinder Part Number, 1 piece list price and view summary once your request has been processed by the quote cell.**



Updated Price for 13759

**donotreply** to: cathy.laskero, cathy.laskero

09/12/2013 11:15 AM

[Hide Details](#)

From: donotreply@parker.com

To: cathy.laskero@parker.com, cathy.laskero@parker.com

▼ 1 attachment



SummaryReport.pdf

Thank you for your price request. Your CPN is 1H000061887.

The current one piece list price is \$329.6 based on the attached summary configuration. Price is firm through January 13, 2014.

Thank you for your continued support.

Industrial Cylinder Division

**10) If the cylinder configuration needs to be processed on a quote you will be notified of that and the formal quote process will begin.**



# Cylinder Quote per Drawing

For cylinder options not listed, please consult factory.

[LIST](#)  
[Consult](#)  
[Manufacturer](#)

Component	Code	Description
Cylinder or Configured Service Parts	CYL	Cylinder
Bore	20	20mm
Double Rod	-	Single Rod
Mounting Style	T	T - Standard Mount
Series	CHE	CHE - Aluminum Body Compact Hydraulic Cylinder
Piston	B	B - Non-Magnetic Piston
Port Type	T	T - SAE Straight Thread O-Ring
Seals	1	Standard (Class 1)
Special Modifications	S	S - Special Modifications - Describe in Part Special Instructions below.
Piston Rod End	4	4 - Style 4 Small Male
Piston Rod End Thread	M	M - Metric
Stroke	66	mm
Port Type - Both Ends	T	T - SAE Straight Thread O-Ring
Port Size - Both Ends	SA2	#2 SAE
Port Location	1	Ports Position 1
Piston Rod Wrench Flats	2F	Standard 2 Wrench Flats

Part Special Instructions:

per dwg 12345

Attached Files:

No Files Attached.

[Attach New File](#)

[Offer of Sale](#)

Copyright ©2012, Parker-Hannifin Corporation.

PC S supports MS IE ver. 7-8.x, Mozilla Firefox 3.x, Apple Safari 3.x, Google Chrome 1.x, Opera 9.x

Other browsers may produce unexpected results.

Email us: [customerinfo@parker.com](mailto:customerinfo@parker.com)

- Create Configuration
- Enter Customer Drawing # in 'Part Special Instructions'
- Click on CPN
- Attach New file box will now appear

# Cylinder Quote per Drawing

- *Browse for File*
- *Upload File*

---

## Attached Files:

File: C:\Users\CL65178\Desktop

- *Your file will show as being attached*

---

## Attached Files:

 [Checklist.xlsx](#) CL65178

- *Continue with quote process by Clicking On Consult Manufacture Link*

# Pneumatic Division Product Series

Hopefully this will assist to request your quote to correct Division

P5G

GP

GV

GA

P1Q

P1M

P1G

LP/S

C

C05

P5T

P5T2

P5L

P5E

HB

XL

OSP-P

GDL

P1X

P1Z

RC/RS

P1DE

SR/SRM/SR

D

P1L

P1A

P/SP

PV

XR

PRNA

P1V-S

3MA

4MA

P1D

Mini Brass 30901/40901

Clamp 3351/3352/3451 , etc

Shock Absorbers

Air Motor B801, F802

Hydrochecks B-171, F172

S Series TT Series

ME/MERL

Akron/Wadsworth, OH

Contact info:

877-321-4736

[pdnquotes@parker.com](mailto:pdnquotes@parker.com)



**Add CPNs to PHConnect cart once they have been quoted**

# Option 1: Customer Resources/Place Order

PHconnect Logged In: Catherine L

home customer resources engineering tools

Welcome

- account status
- catalog search
- order from quotes
- order templates
- place an order
- product information
- phast
- request for quote
- review your orders
- update profile

My Profile

EDI Administration

This link is to access [EDI Administration](#) to administer PHAST and other EDI web products"

Value Management System

Value Management System

C.A.R.E.S.

Login to C.A.R.E.S. by [clicking here.](#)

Cylinder Serial Number Lookup

This link is to access [Serial Number Lookup](#)

Distributor DAS

[Distributor DAS](#)

My Forums

You are a named participant in these web forums:

- [A & H Distributor Forum](#)
- [Automation Group](#)
- [Other forums...](#)

Quick Order Entry

Do you want to enter quote numbers?  (Allows access to Quote Number fields)

Part Type	Quantity	Request Date
Manufacturer Part Number		mm/dd/yyyy
Part		mm/dd/yyyy
1H000065000	1	04/20/2015
		mm/dd/yyyy
		mm/dd/yyyy

Add To Order

*There is no need to use the configurator. Enter CPN, quantity and request date.*

Takes 24 -48 hours to get a CPN into PMCS catalogs in PH Connect

## Option 2: Customer Resources/Catalog Search

Go back into configurator

Please select a catalog to search: All Catalogs

Search by: Manufacturer Part Number Starts with 2A

[Or, click on a Product Category:](#)

[To review the details](#)

Part Number	Part Description
2A- PARKER ICD	SERIES 2A, 2AN, 2AJ & 2ANJ HEAVY C

[Configure](#)

Unit Price: Contact Us  
Available: 0  
Lead Time: 0 days  
Marketing Product Code: 052

PCS - Windows Internet Explorer

https://www.phconnect.com/CRM/Config/StackIT/Industrial%20Cylinder/PhConnect/PhConnectPage/4fcbe63d-d2ea-e111-a6a

Series 2H, 2HX, 2HD, 2HDX, 3H, 3HX, 3HD & 3HDX Heavy Duty, Hydraulic Piston Cyl

English

<u>Part Number</u>	<u>Model Number</u>	<u>Serial Number</u>
is not requested	A	

1H000065000 [Apply](#)

**Click the Part Number heading**

**Enter CPN and click apply**

For cylinder options not listed, please consult factory.

LIST  
Is not calculated

[Add to Catalog](#)  
[View S](#)

Details will come up and you can Add To Order

# Common issues with Entering Orders

The MSS system allows for accurate discounting, if orders are entered correctly – let's review the order entry process

# Entering Orders

- PHConnect is the preferred electronic form of order entry.
- Cylinder Part Number (CPNs) will be required to enter orders for cylinders and configured service parts



# Duplicate Order Entry

- *Clicking the submit button multiple times*
- *While “Please wait” screen is displayed, do not click back button or you will be taken back to submit order screen . If the order (from first click) has not yet been processed the order will submit a 2<sup>nd</sup> time*



## QUOTATION

Parker Hannifin Corporation

PARKER HANNIFIN CYLINDER DIVISION  
500 S WOLF RD  
DES PLAINES, IL 60016  
PHONE 847-298-2400

CUSTOMER'S ORIGINAL COPY

WHEN ORDERING PLEASE  
REFER TO THIS NUMBER

QUOTATION NO. UA11071101

PAGE 1

DATE: 07/18/11 REV 0000

TERMS: NET 30 DAYS

F.O.B.: XXXXXXXXXXXXXXXXXXXX

REFERENCE:

INQUIRY DATE:

EFFECTIVE DATE: 07/11/11

TO: 161335  
CATCHING FLUID POWER  
881 REMINGTON BLVD

BOLINGBROOK, IL 60440

ATTENTION: PURCHASING DEPT

ITEM	QUANTITY	PARKER PART NO.	CUSTOMER PART NO.	UNIT PRICE
20 STD	15.00	1H000001422 1.00T3LCU14A26.000 BRAND: PARKER	QUOTE EXPIRES: 07/11/12	336.6800
MINIMUM ORDER: \$100.00				** TOTAL ** 336.6800

**Remember to use quote on orders or  
You will not get the quoted price**



https://www.phconnect.com/CRM/OrderEntry/orderentry.asp - Windows Internet Explorer

PHconnect

home customer resources engineering tools

account status  
catalog search  
order from quotes  
order templates  
**place an order**  
product information  
phast  
request for quote  
review your orders  
update profile

Billing address: CATCHING FLUID POWER INC  
881 REMINGTON BLVD  
BOLINGBROOK IL 60440

place an order

Quick Order

Do you want to enter quote numbers? **Yes** (Allows access to Quote Number fields)

Part Type  
Manufacturer Part Number

Default Request Date  
mm/dd/yyyy

**Add To Order**

Part	Quantity	Request Date	Quote Number
		mm/dd/yyyy	
		mm/dd/yyyy	
		mm/dd/yyyy	
		mm/dd/yyyy	
		mm/dd/yyyy	
		mm/dd/yyyy	
		mm/dd/yyyy	
		mm/dd/yyyy	
		mm/dd/yyyy	
		mm/dd/yyyy	

start Mail - Inbox - IBM Lot... Customerspecialdeals... CATHY.xlsx 5 Internet Explorer Microsoft PowerPoint ... 125% 2:48 PM

**When placing an order via PH Connect, click on “Place an order” Click on Yes for the question :**

**‘Do you want to enter quote numbers?’ You will need to enter each of the parts manually and enter the quote number for each line that has special discounting**



# AGENCY ORDERS

CATCHING FLD PWR DIV KAMAN  
881 REMINGTON BLVD  
BOLINGBROOK IL 60440-4932

CATCHING FLUIDPOWER  
109 N. LIVELY BLVD  
ELK GROVE VILLAGE IL 60007  
US

PO Number:

Carrier:

Agency:

Notes:

Terms & Conditions:

*Enter the agency 6 digit account number – this account number translates to the bill-to account on your order.*

*No need to change your generic profile*

## CYLINDER

Part	Quantity	Available Qty	Unit Price	Net Price	Extended Price	Request Date	Promise Date	Brand	Delete
<a href="#">1H000000112</a>	<input type="text" value="1"/>	0	2954.4	<a href="#">Contact Us</a>	<a href="#">Contact Us</a>	<input type="text" value="12/31/2013"/>	<a href="#">Contact Us</a>		X
▼ Detail Information									

Detail comments:

Special Instructions: ( Select a maximum of 1 )

- ☐ STAMP WITH (SPECIFY IN DETAIL NOTES ABOVE)
- ☐ STAMP WITH CUSTOMER PART NUMBER
- ☐ STAMP WITH PRIVATE LABEL (SPECIFY IN DETAIL NOTES ABOVE)
- ☐ STAMP WITH PURCHASE ORDER NUMBER
- ☐ TAG WITH (SPECIFY IN DETAIL NOTES ABOVE)

Total Extended Price: [Contact Us](#)

[Submit Order](#) [Save as Template](#) [Update Order](#)

PARKER HANNIFIN CORP  
CYLINDER  
CYLINDER DIV  
500 SOUTH WOLF RD  
P O BOX 5015  
DES PLAINES IL 60016  
[Contact Us](#)

Our biggest discount issues are with ship to deals

Order Date: 07/11/2011

[Help](#)

Billing Address:



Billing address: CATCHING FLUID POWER  
INC  
881 REMINGTON BLVD  
BOLINGBROOK IL 60440

Shipping Address:

[Change Address](#)

[Free Form Address](#)

Address 1: Parker Cylinder Division

Address 2: 500 South Wolf Rd

Address 3:

Address 4:

City/State/Zip: Des Plaines IL 60016

County:

Country: USA

Do not free form address

Please search for the appropriate shipping address

Ship City



Starts with



bolin



CATCHING FLUIDPOWER

881 REMINGTON BLVD  
BOLINGBROOK IL 60440

CATCHING FLUIDPOWER INC

881 REMINGTON BLVD  
BOLINGBROOK IL 60440

*Change the address from pull down box.*

*If the ship to Address is not listed under the pull down menu and you are entering an order with ship to deal, contact Cathy Laskero ([cathy.laskero@parker.com](mailto:cathy.laskero@parker.com)) to set the address up for you prior to completing order or you will not get an accurate discount.*

# Nightly Email Confirmation

**YOU MUST REQUEST TO BE SETUP FOR EMAIL  
CONFIRMATION IF YOU WANT TO RECEIVE  
EMAIL ACKNOWLEDGMENTS**

Thank you for ordering from Parker.

Your order(s) have been received and are being processed. Below is a recap of the orders placed today. You will receive your hard copy acknowledgement within the next 24 hours. For any orders that are in engineering (displayed with a reference #), the hard copy acknowledgement will be issued when it is released.

PO	PART NUMBER	PART DESCRIPTION	QTY	LIST PRICE	DISCOUNT	NET PRICE	ORDER	REFERENCE
115352	1H000009848	Parker Duplex - Model Number in Part Special Instructions	1	\$2,241.00	0.0200	\$2,196.18		003566-0001
115744	1H000011037	1.50CTBBB2HKTS24AC53.000	1	\$1,863.76	0.3400	\$1,230.08	AG296640 A	

# System Enhancements

PARKER HANNIFIN CORP  
CYLINDER  
CYLINDER DIV  
500 SOUTH WOLF RD  
P O BOX 5015  
DES PLAINES IL 60016

Order Date: 03/26/2015

Help

Billing Address: Shipping Address: [Change Address](#) [Free Form Address](#)

AVAILABLE NOW

Mark Number added to the release an order page in PHConnect.

No need to specify in the order header notes.

PO Number:   
Carrier: UPS RED  
Agency:   
Notes:

Mark Number:

**Terms & Conditions.** Offer of Sale  
The items described in this document and other documents or descriptions provided by Parker Hannifin Corporation, its subsidiaries and its authorized distributors are hereby offered for sale at prices to be established by Parker Hannifin Corporation, its subsidiaries and its authorized distributors. This offer and its acceptance by any customer ( Buyer ) shall be governed by all of the following Terms and Conditions. Buyer s order for any such item, when communicated to Parker Hannifin Corporation, its subsidiary or an authorized distributor ( Seller ) verbally or in writing, shall constitute acceptance of this offer.



**COMING SOON**  
**Real time pricing**

PCS - Windows Internet Explorer

http://cyl01adsiprod:8282/Industrial%20Cylinder/PhConnect/PhConnectPage/4fcb63d-d2ea-e111-a6a2-005056bc0011/22149?mfgDiv

live chat

FileEditViewFavoritesToolsHelp

Favorites

Suggested Sites

Web Slice Gallery

Customize Links

Free Hotmail

Windows Marketplace

Windows Media

Windows

Display Current Order

Parker Master Catalo...

Search Results: live c...

PCS

Emails

Page

Safety

Tools

English

Parker

PCS™

Release: 3.0.20.0

Supports: MS IE ver. 7-8.x,

Mozilla Firefox 3.x,

Apple Safari 3.x,

Google Chrome 1.x,

Opera 9.x

COMING SOON

Configured product lead times

For cylinder options not listed, please consult factory.

List

\$977.80

(UNITED STATES DOLLAR)

Lead Time:

3

Add to Order Go To Catalog Search

Add to Order Cont. Series Entry

Add to Order Go To Place An Order

View Summary

Refresh

Quit

CPN

Generate CAD

Component	Code	Description	Files	Warning	Special Instructions
Cylinder or Configured Service Parts	CYL	Cylinder			
Bore	2.50	2.50 Inch			
Cushion Head	—	No Cushion Head			
Double Rod	—	Single Rod			
Mounting	T	T - Basic Mount (NFPA MX0)			
Special Mounting	—	Standard mounting style dimensions			
Mounting Modification	—	No Mounting Modification			
Combination Mounting	—	No Combination Mounting		!	
Series	2H	2H - Heavy Duty Hydraulic Tie Rod (Jewel Gland Style)			
Piston	L	L - Lipseal			
Port Type	T	T - SAE Straight Thread O-Ring			
Seals	1	Standard (Class 1)			
Nut Retained Piston	—	No Nut Retained Piston Option			
Special	—	No Special Modifications			
Piston Rod Number	C1D100	1 - 1.00 Inch			
Piston Rod End	4	4 - Style 4 Small Male			

Done

Local intranet | Protected Mode: Off

100%

File Edit View Favorites Tools Help

★ Favorites | ★ Suggested Sites | Web Slice Gallery | Customize Links | Free Hotmail | Windows Marketplace | Windows Media | Windows

Display Current Order | Parker Master Catalo... | Search Results: live c... | PCS | Emails

Home | RSS | Page | Safety | Tools

# COMING SOON

## Configured product lead times

For cylinder options not listed, please con

Component	Code
Cylinder or Configured Service Parts	CYL
Bore	2.50
Cushion Head	—
Double Rod	—
Mounting	T
Special Mounting	—
Mounting Modification	—
Combination Mounting	—
Series	2H
Piston	L
Port Type	T
Seals	1
Nut Retained Piston	—
Special	—
Piston Rod Number	C1D100
Piston Rod End	4



### Updated Price for 22150

**no-reply** to: cathy.laskero

Cc:

From: no-reply@parker.com

To:

Cc:

1 attachment



SummaryReport.pdf

04/15/2015 06:37 PM

[Hide Details](#)

Thank you for your price request. Your CPN is 1H000062630.

The current one piece list price is \$1500 with a 10 day lead time based on the attached summary configuration. Price is firm through June 30, 2015.

Thank you for your continued support.

Industrial Cylinder Division  
Des Plaines, Illinois  
847-298-2400

Terms: 1%, 10th and 25th -- net 30 days To view the terms and conditions of this price request, visit the Parker Cylinder Division website at [www.parker.com/cylinder](http://www.parker.com/cylinder).

Style 4 Small Male

Office (Network)

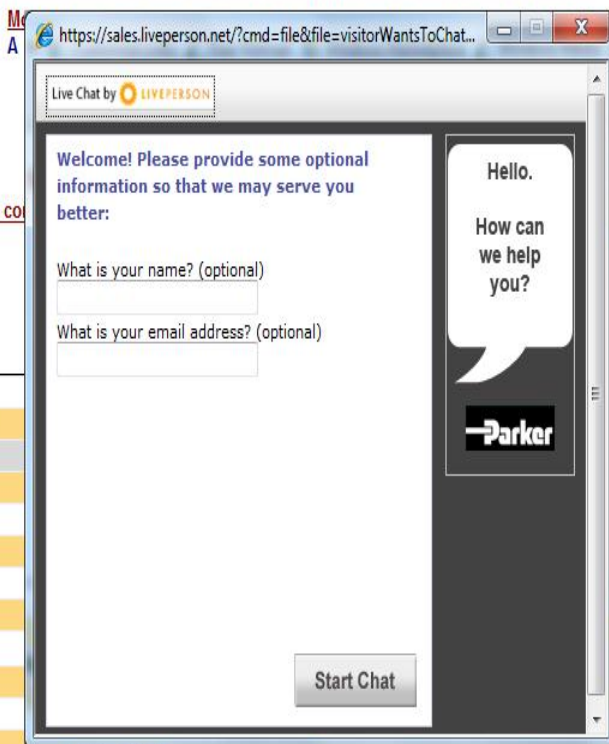
Done

Local intranet | Protected Mode: Off

100%

Part Number  
is not requested

For cylinder options not listed, please contact your local distributor.



Port Size - Head	Please Select
------------------	---------------

## Live chat – converse with a real person in real-time

Generate CAD



# Industrial Cylinder Division

## TOPZ Training



-CS0E0EEE-----

PLYMOUTH, MI  
689930\_\_\_\_ Free-Form? N  
Ship To BASILIN CO

Can enter shipping information  
via 6 digit ship to code

MT 12001 HCA

# TOPZ Back by popular demand!

Frgt Cd B

Many distributors already  
use TOPZ for other divisions

```
collect # _____
```

```
view 8=Detail 9=Table 11=Comnt 12=Exit
```

19/14

# TOPZ Order Entry



CESN

Welcome to CLEVELAND CICS

\* \* \* T E S T \* \* \*

To sign off CICS, enter "CESF LOGOFF" above

Today's Date: 03/18/15

Eastern Time: 21:22:22

To sign on, enter your USERID and PASSWORD

Terminal ID: P135

USERID: T592920

Enter USERID and password to log in ID: T04IP135

PASSWORD: \_

USERID = T + Customer Number

LID: A03CICT2

To change your password, enter a new password twice below

NEW PASSWORD:

NEW PASSWORD:

PF3=End

PF12=Exit CICS

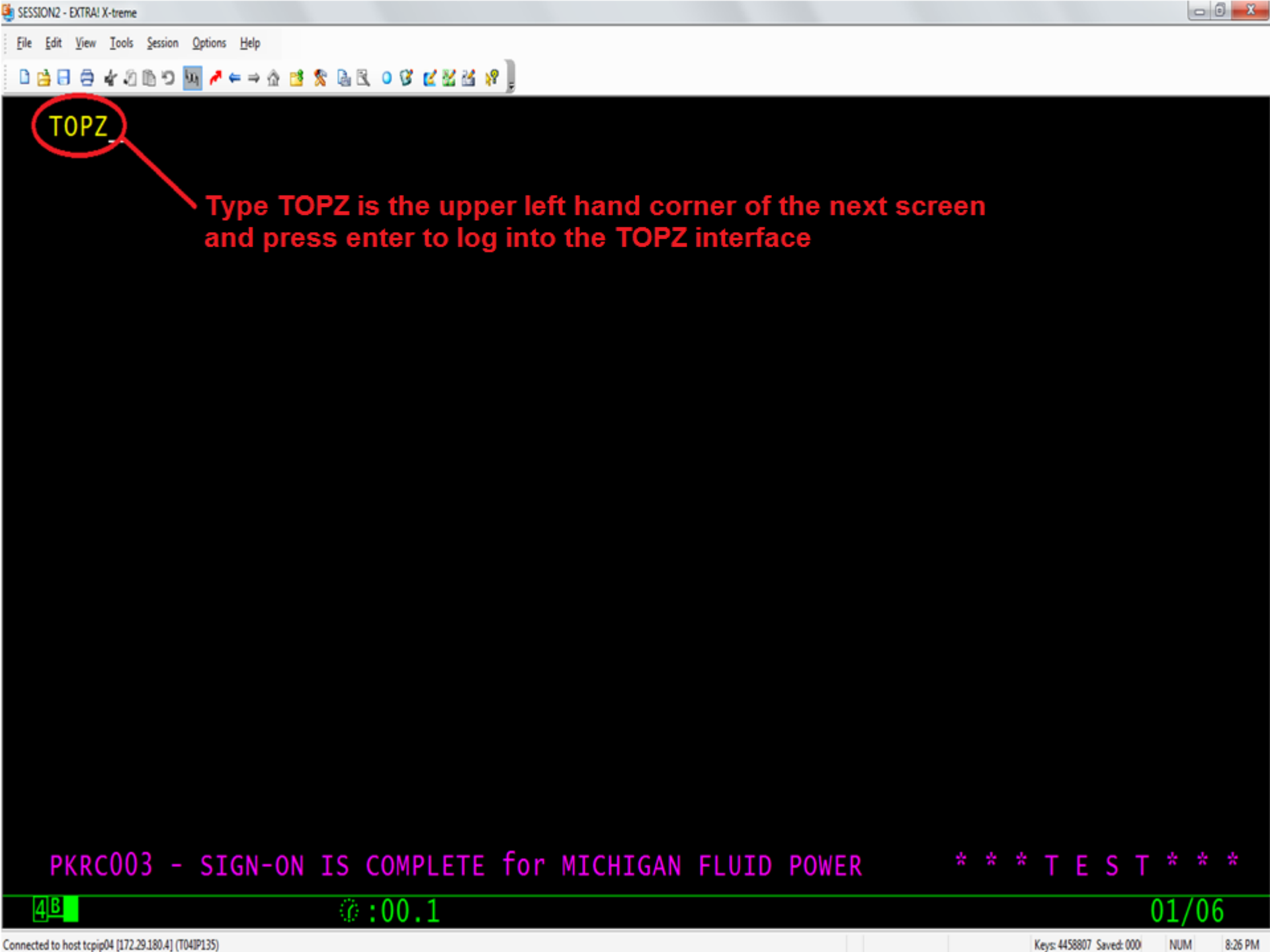
PKRC002 - Please type in your USERID and PASSWORD

4B

:00.3

11/17





TOPZ

Type TOPZ is the upper left hand corner of the next screen and press enter to log into the TOPZ interface

PKRC003 - SIGN-ON IS COMPLETE for MICHIGAN FLUID POWER

\*\*\* T E S T \*\*\*

4B

:00.1

01/06

File Edit View Tools Session Options Help



MGMENU PARKER HANNIFIN ----- TOPS+ ----- CISTEST  
COMMAND ==> \_\_\_\_\_ PAGE ==> 01

-----Available Options----- ---Key1--- ---Key2--- ---Key3---

- 1) TOPS+ -- Sales Order Maintenance
- A) TOPS+ -- Parker Order Status Query
- B) TOPS+ -- Parker Stock Status Query
- C) TOPS+ -- Competitor Part Cross-Reference
- D) TOPS+ -- Distributor Inventory Inquiry

Press F9 to select a division to  
place and order against.

-----  
1=Help 2=Menu 3=End 5=Refresh 7=Backward 8=Forward 9=Divswap 12=Exit

4B

:00.4

02/14





MGMENU PARKER HANNIFIN ----- TOPS+ ----- CISTEST  
COMMAND ==> \_\_\_\_\_ PAGE ==> 01

-----Available options----- ---Key1--- ---Key2--- ---Key3---

- 1) TOPS+ -- Sales Order Maintenance
- A) TOPS+ -- Parker Order Status Query
- B) TOPS+ -- Parker Stock Status Query
- C) TOPS+ -- Competitor Part Cross-Reference
- D) TOPS+ -- Distributor Inventory Inquiry

Type 1 and press enter to create  
a new order

-----  
1=Help 2=Menu 3=End 5=Refresh 7=Backward 8=Forward 9=Divswap 12=Exit

File Edit View Tools Session Options Help



MGSUBM ----- SALES ORDER MAINTENANCE ----- CISTEST  
COMMAND ==> \_\_\_\_\_ PAGE ==> 01

-----Available Options----- ---Key1--- ---Key2--- ---Key3---  
1) TOPS+ -- Sales Order Entry PO # Ship To #  
2) TOPS+ -- Sales Order Maintenance PO # Item #  
3) TOPS+ -- Distributor Inventory Maintenance

Type 1 and press enter to  
create a new order

-----  
1=Help 2=Menu 3=End 5=Refresh 7=Backward 8=Forward 9=Divswap 12=Exit

4B

:00.2

02/14



## OEEOED Ship To Selection List

-CSOEEOED----

Command

MORE... Page==&gt; 01

YLD

CYLINDER

PLYMOUTH, MI

Language \_ English

592920\_\_\_ M F P AUTOMATION ENGRG S**Change your sold to if entering an agent  
order and press enter.**

Ship To	Ship-to-Name	Address	City	ST
AS1530	ADVANCED SYSTEMS INCORPOR	400 76TH STREET SOUTHWEST	BYRON CENTER	MI
A27230	CONCEPT SYSTEMS INC	3370 JEFFERSON S E	GRAND RAPIDS	MI
A45104	ALTERNATIVE ENGINEERING I	1642 BROADWAY N W	GRAND RAPIDS	MI
A45542	HAYES LEMMERZ CADILLAC OP	1500 FOURTH AVE	CADILLAC	MI
A49726	SPECIALTY TOOLING SYSTEMS	4315 THREE MILE ROAD	GRAND RAPIDS	MI
A54343	EAGLE TECHNOLOGIES SRVS L	1424 SADLIER CIRCLE EAST	INDIANAPOLIS	IN
A95423	TRIPLE E MANUFACTURING CO	8535 EAST MICHIGAN AVENUE	PARMA	MI
A99046	DYNAMIC TOOLING & DESIGN	4201 BROCKTON DRIVE	GRAND RAPIDS	MI
A99715	INTEGRITY FABRICATORS	5282 RICH STREET	ALLENDALE	MI
CAG615	COMPASS AUTOMOTIVE GROUP	3559 KRAFT SE	GRAND RAPIDS	MI
C02307	SAF HOLLAND	1122 INDUSTRIAL AVENUE	HOLLAND	MI
C07846	MAGNA-DONNELLY	3401 128 AVE	HOLLAND	MI
C11932	OOSTERBAAN MACHINE & TOOL	6661 ROGER DRIVE	JENISON	MI

&lt;&lt;&lt;&lt;&lt;&lt;&lt;&lt; PLEASE SELECT A SHIPPING ADDRESS &gt;&gt;&gt;&gt; &gt;&gt;&gt;&gt;&gt;

1=HELP 2=MENU 3=END 5= REFRESH 7=BACKWARD 8=FORW ARD 9=TABLE 12=EXIT

4B

:00.2

06/05



OEOEED Ship To Selection List

-CSOEOEED----

Command

MORE... Page==&gt; 01

YLD

CYLINDER

PLYMOUTH, MI

Language \_ English

Select your ship to and hit enter.

592920\_\_\_\_ M F P AUTOMATION ENGRG S

If you cannot find your ship-to, you can  
free form address on the next screen.

Ship To	Ship-to-Name	Address	City	ST
AS1530	ADVANCED SYSTEMS INCORPOR	400 76TH STREET SOUTHWEST	BYRON CENTER	MI
A27230	CONCEPT SYSTEMS INC	3370 JEFFERSON S E	GRAND RAPIDS	MI
A45104	ALTERNATIVE ENGINEERING I	1642 BROADWAY N W	GRAND RAPIDS	MI
A45542	HAYES LEMMERZ CADILLAC OP	1500 FOURTH AVE	CADILLAC	MI
A49726	SPECIALTY TOOLING SYSTEMS	4315 THREE MILE ROAD	GRAND RAPIDS	MI
A54343	EAGLE TECHNOLOGIES SRVS L	1424 SADLIER CIRCLE EAST	INDIANAPOLIS	IN
A95423	TRIPLE E MANUFACTURING CO	8535 EAST MICHIGAN AVENUE	PARMA	MI
A99046	DYNAMIC TOOLING & DESIGN	4201 BROCKTON DRIVE	GRAND RAPIDS	MI
A99715	INTEGRITY FABRICATORS	5282 RICH STREET	ALLENDALE	MI
CAG615	COMPASS AUTOMOTIVE GROUP	3559 KRAFT SE	GRAND RAPIDS	MI
C02307	SAF HOLLAND	1122 INDUSTRIAL AVENUE	HOLLAND	MI
C07846	MAGNA-DONNELLY	3401 128 AVE	HOLLAND	MI
C11932	OOSTERBAAN MACHINE & TOOL	6661 ROGER DRIVE	JENISON	MI

&lt;&lt;&lt;&lt;&lt;&lt;&lt;&lt; PLEASE SELECT A SHIPPING ADDRESS &gt;&gt;&gt;&gt;&gt; &gt;&gt;&gt;&gt;&gt;

1=HELP 2=MENU 3=END 5= REFRESH 7=BACKWARD 8=FORW ARD 9=TABLE 12=EXIT

4B

:00.2

06/05

- CS0E0EEE-----

YLD	CYLINDER	DES	PLAINES, IL
	592920___	Language	English
		AS1530___	Free-Form? <b>N</b>
Sold To	MFP AUTOMATION ENGINEERING	Ship To	ADVANCED SYSTEMS INCORPORATED
	4556 SPARTAN INDL DR SW		400 76TH STREET SOUTHWEST

**Enter PO number**

'ILLE MI 49418-2510

BYRON CENTER  
MI 49315 USA

PO Number 0318140849\_\_\_\_\_

Agent No \_\_\_\_\_

Frqgt Cd

**Change to a Y to manually enter a ship to address**

New Carr **UPSG** \_\_\_\_\_  
Mark **560489** \_\_\_\_\_

Order Type: 1\_

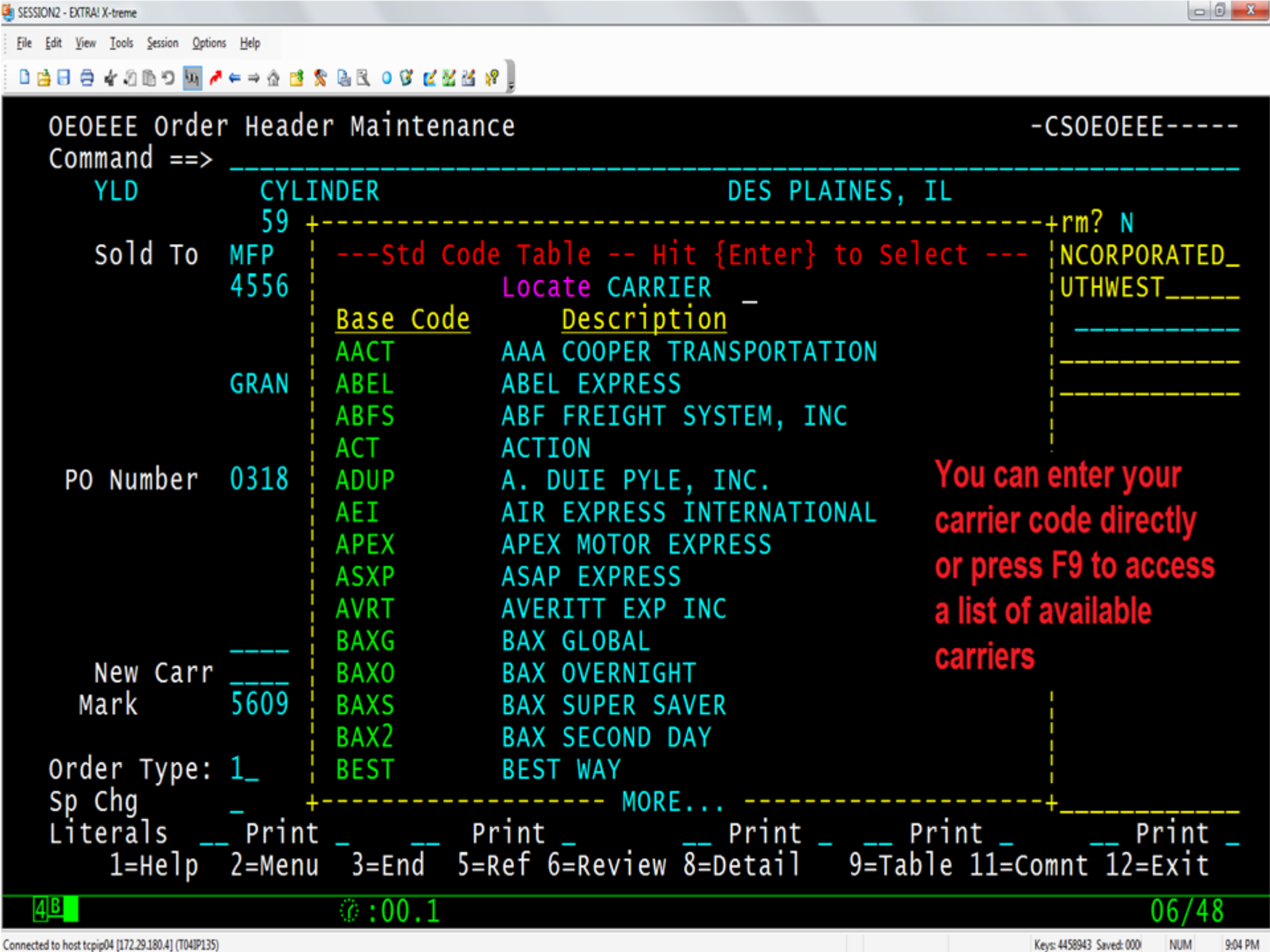
Sp Chg

```

Literals  __ Print __      Print __      Print __      Print __      Print __
          1=Help  2=Menu  3=End  5=Ref 6=Review 8=Detail  9=Table 11=Comnt 12=Exit

```





- CS0E0EEE-----

YLD	CYLINDER	DES PLAINES, IL
-----	----------	-----------------

Sold To	MFP AUTOMATION ENGINEERING	Ship To	ADVANCED SYSTEMS INCORPORATED_
	4556 SPARTAN INDL DR SW		400 76TH STREET SOUTHWEST_____

GRANDVILLE MI 49418-2510

BYRON CENTER

MI 49315 USA

PO Number 0318140849\_\_\_\_\_

Agent No \_\_\_\_\_

Frqt Cd

New Carr UPSG  
Mark 560489

**Enter shipping method and freight code (A = Prepaid, B = Prepaid/Add, C = Collect). Press F11 to enter header comments**

```
Sp Chg
Literals  _ Print _ _ Print _ _ Print _ _ Print _ _ Print _
1=Help 2=Menu 3=End 5=Ref 6=Review 8=Detail 9=Table 11=Comnt 12=Exit
```

4B

⌚ :00.2

19/20

OE0EE2 Header Comnts Maintenance

-CS0E0EE2----

Command ==>

Page 01

Div YLD-01-1A Lang English

Mode CHANGE

Sales orde 065920

Cust PO 0318140849

Comnt Seq 01

PO rel

Comments

WHEN SHPPNG TO MIFP:<100# UPS COLLECT #48X065

>100# CALL 866 210-8146 WORLDWIDE EXP 4 INSTR

DROPSHIPMENTS - FOLLOW INSTRUCTIONS ON ORDER

OR CALL: MIFP @ 616-538-5700

Enter comments here.

This will also pre-fill with lag

standard customer

notes. Press F10 when

complete.

Last maint date 03/18/15

1=Help 2=Menu 3=End 4=Nxt 5=Rfr 6=Rev 7=Bwd 8=Fwd 9=Table 10=Detail 12=Exit

4B

:00.2

09/02

SESSION2 - EXTRA! X-treme

File Edit View Tools Session Options Help

OE0EE3 Order Detail Maintenance

-CS0E0EE3----

Page 01

COMMAND ==>

Div YLD-01-1A Lang English CurrCd Mode CHANGE

Sls Ord 065920 Cust PO 0318140849 Name MFP AUTOMATION ENGINEERIN \$774.25

Seq/C Ent Part/Cust Part Qty/P/O Pric/OD Cd Disc Req Dt Prm Dt

1

1H000050000

1

1173.1000

.3400

031815

031815

000001

FAC110851S

12.000

2

.0000

000002

3

.0000

000003

4

.0000

000004

5

.0000

000005

6

.0000

000006

7

.0000

000007

8

.0000

000008

9

.0000

000009

Enter part number and quantity to order.

Enter request date without slashes

1=Help 2=Menu 3=End 4=Nxt 5=Rfr 6=Rev 7=Bwd 8=Fwd 9 =Tbl 10=Hld 11=Cmt 12=Ext

4B

:00.1

08/09

Connected to host tcpip04 [172.29.180.4] (T04IP135)

Keys: 4459081 Saved: 000 NUM 9:19 PM



## OE0EE3 Order Detail Maintenance

-CS0E0EE3----

COMMAND ==&gt;

Page 01

Div YLD-01-1A Lang English CurrCd Mode CHANGE

sls ord 065920 Cust PO 0318140849 Name MFP AUTOMATION ENGINEERIN \$774.25

Seq/C Ent Part/Cust Part Qty/P/O Pric/OD Cd Disc Req Dt Prm Dt

S 1 1H000050000 1 1173.1000 .3400 031815 031815

000001 FAC110851S 12.000 - - - - -

. 2 - - - - - .0000 - - - - -

000002 - - - - - .0000 - - - - -

. 3 - - - - - .0000 - - - - -

000003 - - - - - .0000 - - - - -

. 4 - - - - - .0000 - - - - -

000004 - - - - - .0000 - - - - -

. 5 - - - - - .0000 - - - - -

000005 - - - - - .0000 - - - - -

. 6 - - - - - .0000 - - - - -

000006 - - - - - .0000 - - - - -

. 7 - - - - - .0000 - - - - -

000007 - - - - - .0000 - - - - -

. 8 - - - - - .0000 - - - - -

000008 - - - - - .0000 - - - - -

. 9 - - - - - .0000 - - - - -

000009 - - - - - .0000 - - - - -

1=Help 2=Menu 3=End 4=Nxt 5=Rfr 6=Rev 7=Bwd 8=Fwd 9 =Tbl 10=Hld 11=Cmt 12=Ext

4B

:00.1

06/09



## OE0EE4 Order Detail Maintenance

==&gt;

Div YLD-01-1A Name MFP AUTOMATION ENGINEERIN Lang English Mode CHANGE  
 Sales 0 065920 Cust PO 0318140849 CurrCd Quote  
 Dtl Seq 0001 Ent Part 1H000050000 Qty Ord 1.00  
 Cust Se 000001 Cust Par FAC110851S 12.000 Qty BO 1.00 Disc .3400  
 Pkr Part 1H000050000 Price 1173.1000  
 UoM EA\_ Amt

CS0E0EE4----

Go Back to Multi-parts

Place cursor here and press  
 enter to add additional items  
 to the order

EPF	N	Quantity	Req	Quantity	Req_date	Prm_date
1		1.00	031			
3						
5						
7						
9						
11						

Total \$774.25

Enter quote number  
 here

Cont No  
 Ship to Enter dt 03/18/15

Press F11 to add detail comments

1=Help 2=Menu 3=End 4=Nxt 5=Rfr 6=Rev 7=Bwd 8=Fwd 9=Tbl 10=Hld 11=Cmt 12=Ext

4B

:00.1

04/12





OE0EE3 DETAIL ADDED

-CIOEE3M1-002

COMMAND ==&gt;

Page 01

Div YLD-01-1A Lang English CurrCd Mode CHANGE

Sls Ord 065921 Cust PO 0318150849 Name MFP AUTOMATION ENGINEERIN \$774.25

Seq/C Ent Part/Cust Part Qty/P/O Pric/OD Cd Disc Req Dt Prm Dt

1 1H000050000 1 1172 1000 2400 021015 021015

000001 FAC110851S 12.000 - - - - - - - - - -

Press F3, select YES, and press  
enter to submit your order

2 - - - - - - - - - -

000002 - - - - - - - - - -

3 - - - - - - - - - -

000003 - - - - - - - - - -

4 - - - - - - - - - -

000004 - - - - - - - - - -

5 - - - - - - - - - -

000005 - - - - - - - - - -

6 - - - - - - - - - -

000006 - - - - - - - - - -

7 - - - - - - - - - -

000007 - - - - - - - - - -

8 - - - - - - - - - -

000008 - - - - - - - - - -

9 - - - - - - - - - -

000009 - - - - - - - - - -

1=Help 2=Menu 3=End 4=Nxt 5=Rfr 6=Rev 7=Bwd 8=Fwd 9=Tbl 10=Hld 11=Cmt 12=Ext

# TOPZ Order Status





MGMENU PARKER HANNIFIN ----- TOPS+ ----- CISTEST  
COMMAND ==> \_\_\_\_\_ PAGE ==> 01

-----Available Options----- ---Key1--- ---Key2--- ---Key3---

- 1) TOPS+ -- Sales Order Maintenance
- A) TOPS+ -- Parker Order Status Query
- B) TOPS+ -- Parker Stock Status Query
- C) TOPS+ -- Competitor Part Cross-Reference
- D) TOPS+ -- Distributor Inventory Inquiry

Type A and press enter to check  
order status.

-----  
1=Help 2=Menu 3=End 5=Refresh 7=Backward 8=Forward 9=Divswap 12=Exit



GQQQ7B GQS Order Status Query

COMMAND ==> \_\_\_\_\_

Enter the following selections, then press ENTER.

Enter the customer number you wish to query:

Customer Number ==> 592920\_\_\_\_

optionally, enter one of the qualifying items:

Parker Part Number ==> \_\_\_\_\_

Purchase Order Number ==> 0318140849\_\_\_\_\_

Entered Date ==> \_\_\_\_\_

Customer Part Number ==> \_\_\_\_\_

Sales Order Number ==> \_\_\_\_\_

Division ID ==> \_\_\_\_\_

Fill out any combination  
of fields to perform as  
specific or generic of  
search as you wish and  
hit enter.

Place the cursor in the Division ID, Customer Number, or Part Number  
field and press PF9 to get a table of known values for the field

-----  
1=Help 2=Menu 3=End 5=Refresh 9=Table 12=Exit



GQQQ7C GQS Order Query by Customer Purchase Number

COMMAND ==&gt; \_\_\_\_\_

PAGE 01

Customer Number: 592920 M F P AUTOMATION ENGRG STR GRANDVLE MI

Customer PO Number	Div Order#	Entered	Printed	Shipped	Comp1
0318140849	CYL 076966	05/10/15			No

Place your cursor over the order you  
wish to display details for and hit  
enter.

----- For detail, place cursor on desired line and press ENTER. -----  
1=Help 2=Menu 3=End 5=Refresh 7=Backward 8=Forward 12=Exit



## GQQQ7I GQS Order Query Line Item Listing

COMMAND ==&gt; \_\_\_\_\_

PAGE 01

Div # CYL Sp Chg:  
Order # 076966 Total Releases: 000 Cust PO: 0318140849  
Sold To: MFP AUTOMATION ENGINEERING Ship To: ADVANCED SYSTEMS INCORPORATED  
592920 4556 SPARTAN INDL DR SW AS1530 400 76TH STREET SOUTHWEST

GRANDVILLE MI 49418-2510 BYRON CENTER MI 49315 US

Item	Part Number	Ord Qty	B/O Qty	PromDate	Alc Qty	Shp Qty	ShipDate
0001	1H000050000	1	1	05/11/15			00/00/00

Place your cursor over the item that you wish  
to view additional details for and hit enter.

----- For detail, place cursor on desired line and press ENTER -----  
1=Help 2=Menu 3=End 5=Refresh 7=Backward 8=Forward 12=Exit

GQQ7J Global Order Status Query

COMMAND ==> \_\_\_\_\_

Item details such as part description, price, discount, shipment status and other information will be available here. Hit F3 when you have completed your review.

ORDER#	ITEM	PARKER_PART/CUSTOMER_PART	PART_DESCRIPTION/PROD_CODE	MFG_LOC
076966	0001	1H000050000	FAC110851S 12.000	1C
	00000	FAC110851S 12.000	00968ZS**Y	PLYMOUTH, MI

PRICE	DISC	ORD_QTY	B/L_QTY	ANP_QTY	ALC_QTY	PRE_QTY	SHP_QTY	UNSCHE	PRTY
1173.10	.3400	1	1	0	0	0	0	0	

SHP_LOC	WHSE	DETAIL_CODE	PRC_COD	SP_CODE	SP_CHARGE	CONTRACT_NUMBER
1C					.00	

-----SCHEDULED BACKLOG-----

SCH_QTY	REQ_DT	PRM_DT	R	SCH_QTY	REQ_DT	PRM_DT	R	SCH_QTY	REQ_DT	PRM_DT	R
1	051115	051115	R	00000000				00000000			

-----SHIPMENT RELEASES-----

RLSE	SHP_QTY	SHP_DT	CARRIER	BILL-OF-LADING
NO SHIPMENTS				

-----

1=Help 2=Menu 3=End 5=Refresh 7=Backward 8=Forward 12=Exit

# TOPZ Access

If you previously used FP80 TOPS and have placed an order with Industrial Cylinder Division in the previous 18 months, then you are already setup to use TOPZ with your former user ID and password.

Please contact your plant sales coordinator to request access if you would like to use TOPZ and do not already have access.

# Thank you!

## Contacts for issues/questions

- Cathy Laskero
  - [Cathy.laskero@parker.com](mailto:Cathy.laskero@parker.com)
  - 847-294-2645
- Nate Mowrey
  - [nmowrey@parker.com](mailto:nmowrey@parker.com)
  - 847-294-2681

# Questions

