

AC30 Variable Speed Drive

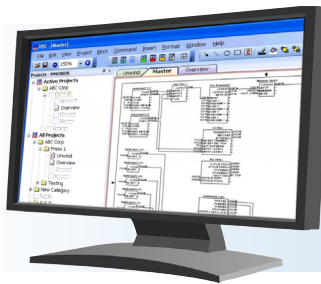
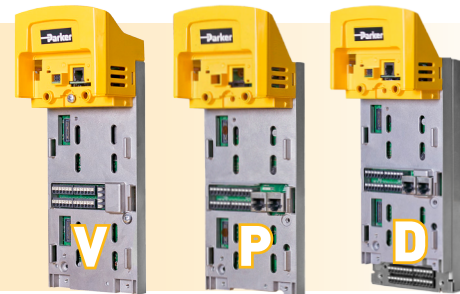
New Features For 2017



Parker's Electromechanical and Drives Division offers a wide range of drives including the AC30 series. Since its introduction, new features have been added and additional power ratings made available. Here is a summary of new units available today:

New Features

To complement the AC30V series, two new variants are available. The AC30P adds enhanced communications and peer-to-peer connectivity. The AC30D includes all of that plus dual encoder ports and registration mark input for the most complex applications.



DSE Lite Connectivity

For greater compatibility with other Parker AC and DC drives, the AC30 can now be accessed with Parker **DSE Lite** software. DSE Lite, a free download, allows the user to program, configure, and monitor operation easily and conveniently from a laptop computer.

LINKnet Compatibility

The AC30 series now joins AC890, AC690+, and DC590+ by offering LINKnet connectivity, with no additional hardware required.

LINKnet



Resolver Feedback

A new option for the AC30P and AC30D allows the use of a resolver for feedback, opening the door to compatibility with more PMAC servo motors.

Power Range Expansion

All models of the AC30 series are now available through 350 HP, formerly 100 HP. All ratings are UL listed.



ENGINEERING YOUR SUCCESS.



AC30V

The AC30V is the base drive for **standalone applications**. More than a basic pump and fan drive, its program can be modified with easy to use DSE Lite or Parker Drive Quicktool (PDQ) to match your exact requirements. With full access from any network via its own IP address the drive can be integrated into any automation system via the top-mounted Ethernet port.



AC30P

Supporting latest developments in IoT and employing principles discussed in Industry 4.0, the AC30P is equipped with **Profinet, Ethernet/IP and Modbus TCP/IP via dual Ethernet ports**. This allows more advanced applications including multiple drive configurations. Plug into one port and access multiple drives supported by 1588 time synchronized peer to peer communication.



AC30D

The AC30D module gives you the great features of the AC30P, as well as additional built in terminals to allow **dual encoder inputs and an encoder output**. This gives systems functionality to the AC30 allowing “electronic line shaft” capability, phase locking between drives, and registration control. This also frees up the I/O plug in slot to allow for even more I/O to be added if needed.

Feature	AC30V	AC30P	AC30D
Application Macros	Basic	System	System
Safety Torque Off (STO)	✓	✓	✓
Modbus Server	✓	✓	✓
Basic web server	✓	✓	✓
Parker Drive Quick (PDQ) tool programming	✓	✓	✓
DSE Developer software for legacy drive replacements	✓	✓	✓
Ethernet/IP	Option	✓	✓
Profinet	Option	✓	✓
Modbus client		✓	✓
System applications libraries		✓	✓
1588 time synchronized peer to peer comms		✓	✓
SMART diagnostics		✓	✓
User customizable web server		✓	✓
Parker Drive Developer (PDD) software (Codesys IEC61131)		✓	✓
Virtual master synchronization (same as AC890)		✓	✓
Multi-axis phase locking (same as AC690/890)		✓	✓
Resolver feedback		Option	Option
Dual encoder inputs			✓
Programmable encoder output			✓
2 high speed mark registration inputs			✓

To learn more about the AC30 family of drives and download a catalog, please visit solutions.parker.com/ac30

Parker Hannifin

Electromechanical & Drives Div.
9225 Forsyth Park Dr.
Charlotte, NC 28273
Tel: (704) 588-3246

www.parker.com/ssdusa
Email: info.us.ssd@parker.com